

SWABR ONE DEPARTURE (RNAV)

SC-2, 28 NOV 2024 to 26 DEC 2024

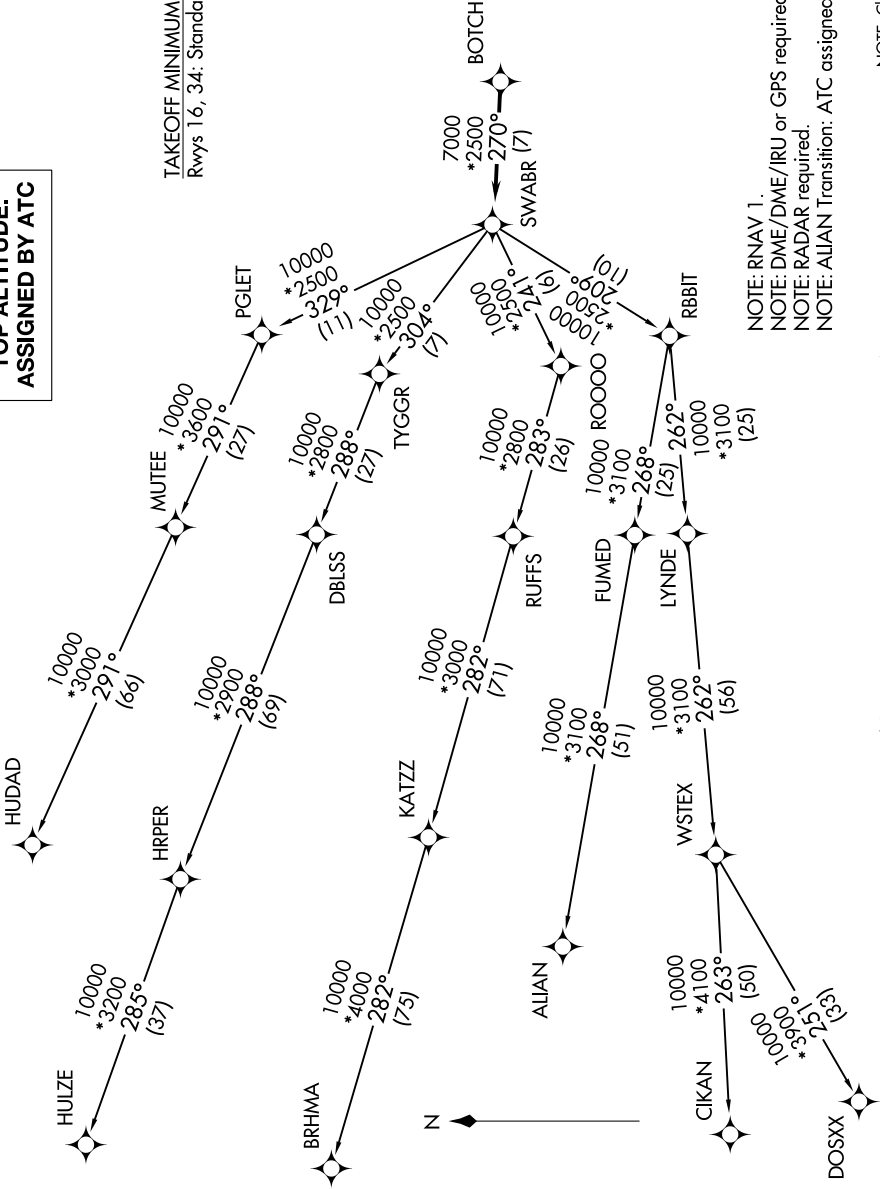
**TOP ALTITUDE:
ASSIGNED BY ATC**

LONE STAR DEP CON
125.2 343.65
CTAF
122.9

TAKEOFF MINIMUMS
Rwys 16, 34: Standard.

NOTE: RNAV 1.
NOTE: DME/DME/IRU or GPS required.
NOTE: RADAR required.
NOTE: ALIAN Transition: ATC assigned only.

NOTE: Chart not to scale.



(CONTINUED ON FOLLOWING PAGE)

SC-2, 28 NOV 2024 to 26 DEC 2024

SWABR ONE DEPARTURE (RNAV)