

| | | |
|-------------|----------|-------------|
| APP CRS | Rwy Idg | 3202 |
| 183° | TDZE | 287 |
| | Apt Elev | 287 |

RNAV (GPS) RWY 18

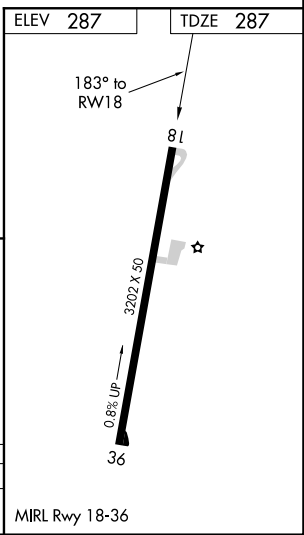
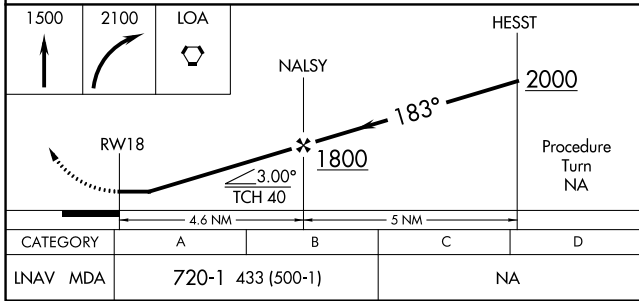
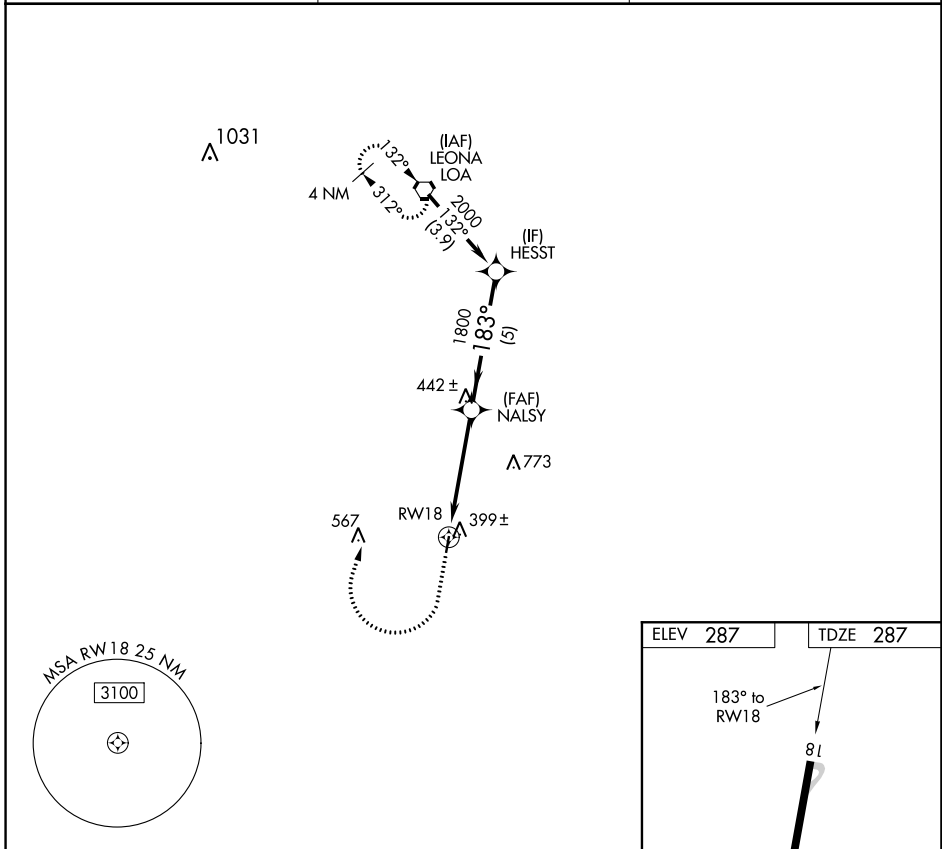
MADISONVILLE MUNI (51R)

RNP APCH.

▼ Use Huntsville Muni altimeter setting.
▲ NA Procedure NA at night.
 Rwy 18 helicopter visibility reduction below 1 SM NA.

MISSED APPROACH: Climb to 1500, then climbing right turn to 2100 direct LOA VORTAC and hold.

| | | |
|----------------------------|--------------------------------------|----------------------|
| UTS ASOS 119.425 | HOUSTON CENTER 134.8 269.6 | CTAF 122.9 |
|----------------------------|--------------------------------------|----------------------|



SC-5, 28 NOV 2024 to 26 DEC 2024

SC-5, 28 NOV 2024 to 26 DEC 2024