

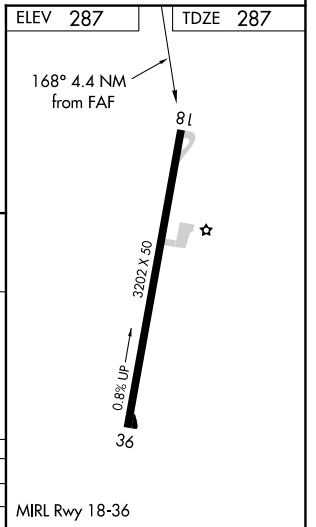
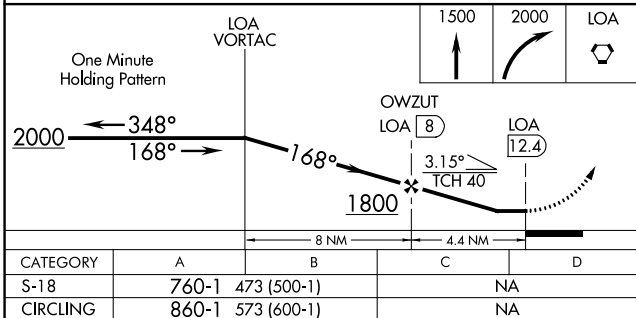
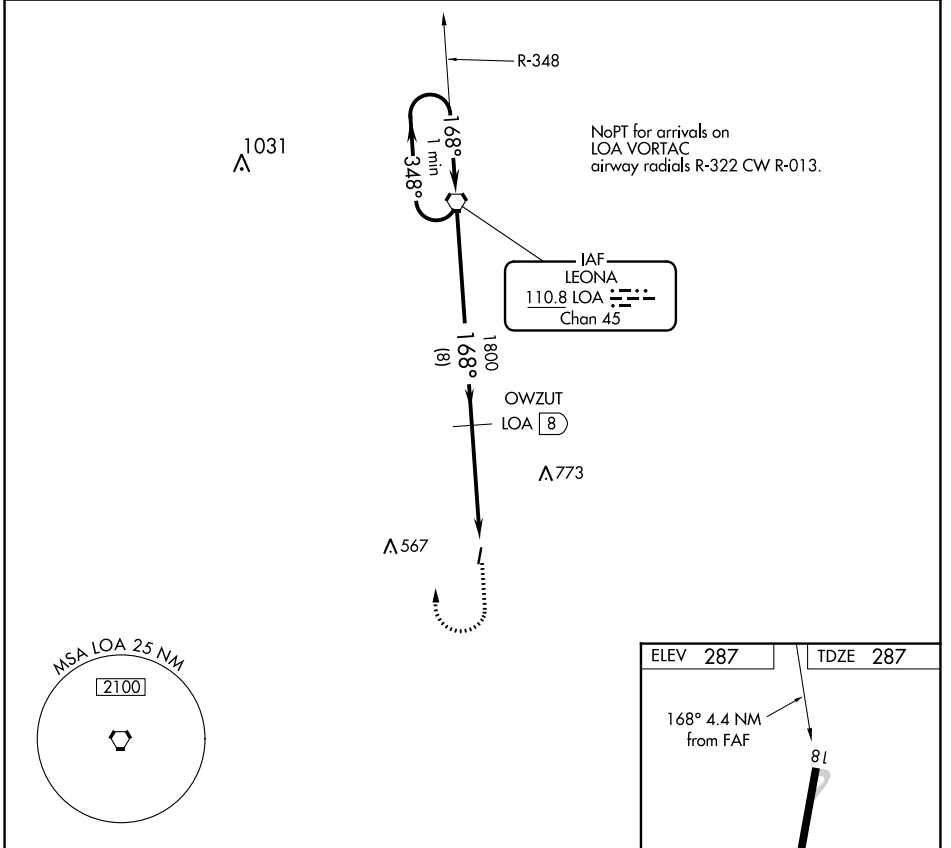
VORTAC LOA <b>110.8</b> Chan <b>45</b>	APP CRS <b>168°</b>	Rwy Idg <b>3202</b> TDZE <b>287</b> Apt Elev <b>287</b>
--	------------------------	---

# VOR/DME RWY 18

MADISONVILLE MUNI (51R)

<p>▼ Use Huntsville Muni altimeter setting. ▲ NA Procedure NA at night. ▲ NA Helicopter visibility reduction below 1 SM NA.</p>	<p>MISSED APPROACH: Climb to 1500, then climbing right turn to 2000 direct LOA VORTAC and hold.</p>
---	---

<p>UTS ASOS <b>119,425</b></p>	<p>HOUSTON APP CON <b>134.8 269.6</b></p>	<p>CTAF <b>122.9</b></p>
------------------------------------	---	------------------------------



SC-5, 28 NOV 2024 to 26 DEC 2024

SC-5, 28 NOV 2024 to 26 DEC 2024