

# KUSSO ONE DEPARTURE (RNAV)

SC-2, 28 NOV 2024 to 26 DEC 2024

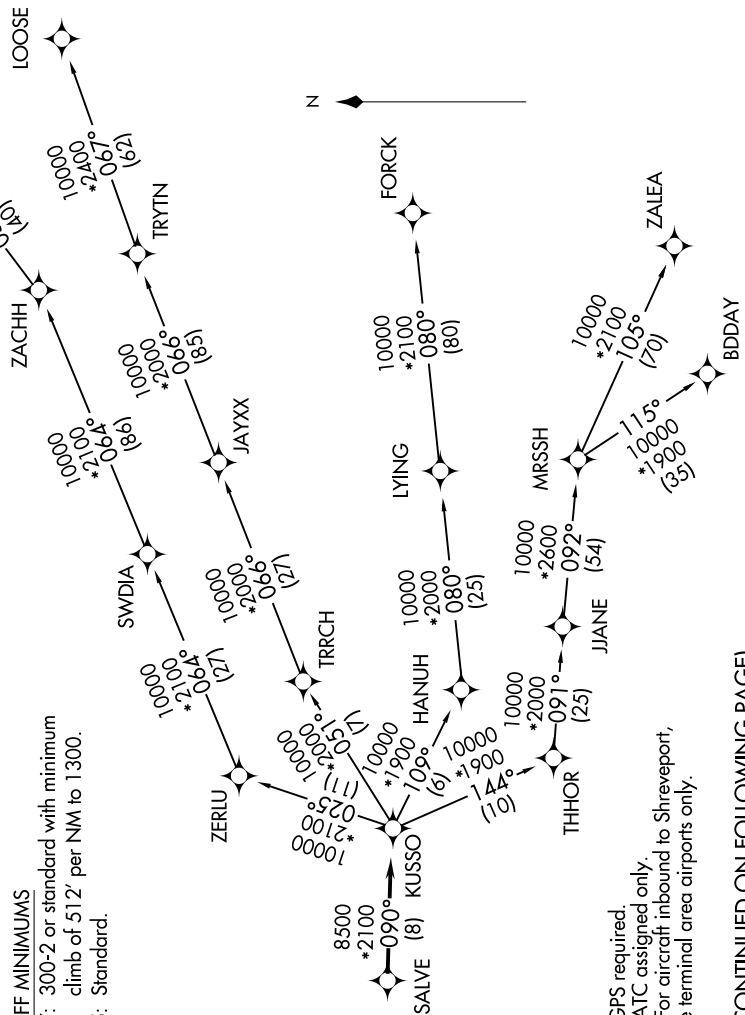
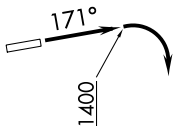
**TOP ALTITUDE:  
ASSIGNED BY ATC**

### TAKEOFF MINIMUMS

Rwy 17: 300-2 or standard with minimum climb of 512' per NM to 1300.

Rwy 35: Standard.

LONE STAR DEP CON  
135.975 379.9  
CTAF  
123.0



NOTE: RADAR required.  
 NOTE: RNAV 1.  
 NOTE: DME/DME/IRU or GPS required.  
 NOTE: BDDAY Transition: ATC assigned only.  
 NOTE: MRSSH Transition: For aircraft inbound to Shreveport, Jackson and Monroe terminal area airports only.

(CONTINUED ON FOLLOWING PAGE)

NOTE: Chart not to scale.

SC-2, 28 NOV 2024 to 26 DEC 2024

# KUSSO ONE DEPARTURE (RNAV)