

APP CRS	Rwy Idg	2609
183°	TDZE	777
	Apt Elev	779

RNAV (GPS) RWY 18

PAXTON (1C1)

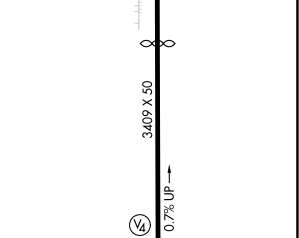
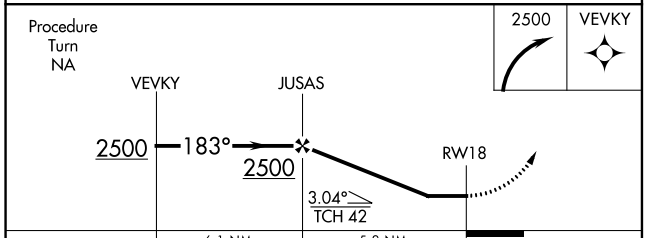
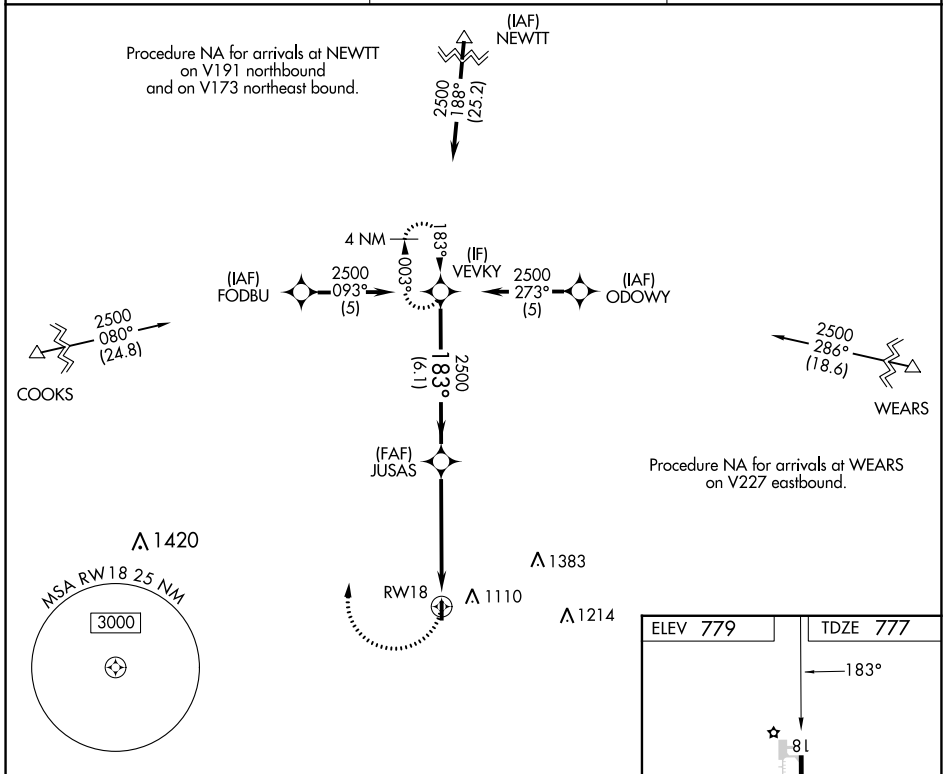
NA DME/DME RNP-0.3 NA. Helicopter visibility reduction below 1 SM NA. Use Champaign-Urbana altimeter setting; when not received, use Decatur altimeter setting and increase all MDA 80 feet; increase LNAV Cat C and Circling all Cats visibility ¼ SM. Procedure NA at night.

MISSED APPROACH: Climbing right turn to 2500 direct VEVKY and hold.

CMI ASOS
124.85

CHAMPAIGN APP CON ★
121.35 285.65

UNICOM
122.8 (CTAF)



CATEGORY	A	B	C	D
LNAV MDA	1400-1	623 (700-1)	1400-1¾ 623 (700-1¾)	NA
CIRCLING	1540-1 761 (800-1)	1540-1¼ 761 (800-1¼)	1620-2½ 841 (900-2½)	NA

LIRL Rwys 18-36
REIL Rwy 18

EC-3, 28 NOV 2024 to 26 DEC 2024

EC-3, 28 NOV 2024 to 26 DEC 2024