

APP CRS	Rwy Idg	6669
229°	TDZE	76
	Apt Elev	76

RNAV (GPS) RWY 23

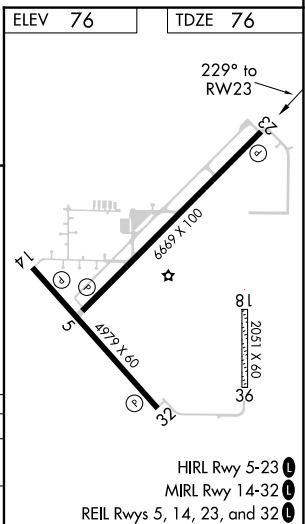
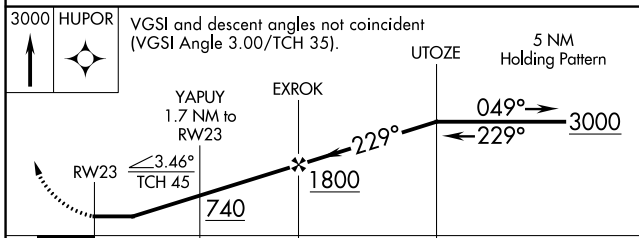
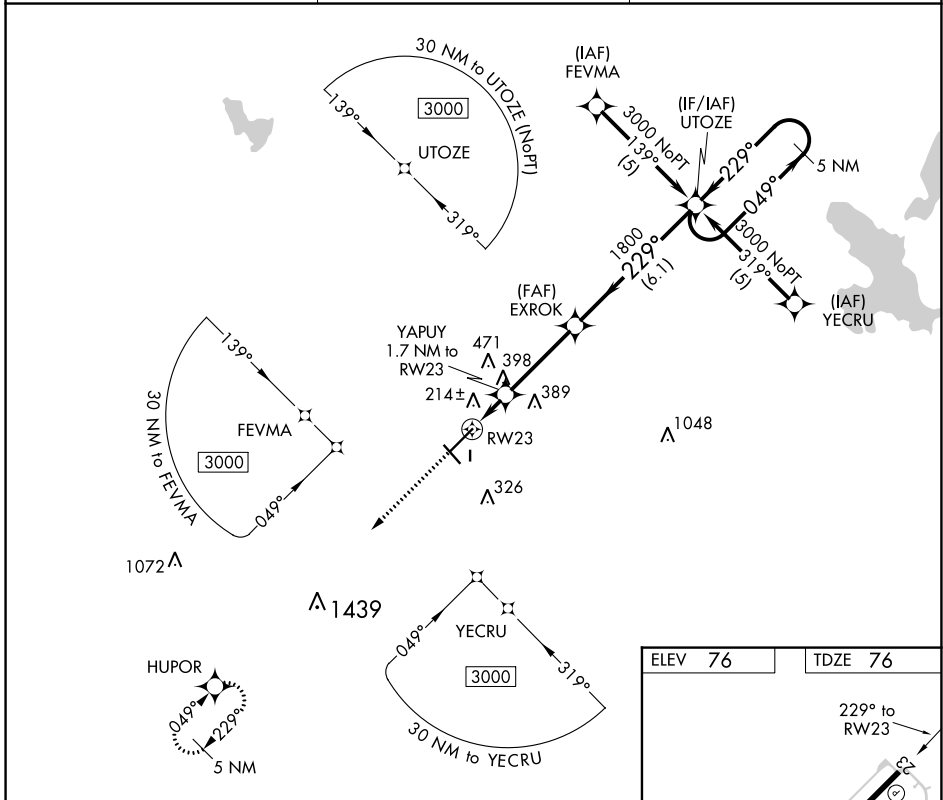
WILLISTON MUNI (X60)

RNP APCH.

When local altimeter setting not received, use Ocala altimeter setting and increase all MDAs 60 feet and all Cat C visibilities ¼ SM. Circling Rwy 14, 32 NA at night. Rwy 23 helicopter visibility reduction below ¾ SM NA. Circling NA to Rwys 18 and 36.

MISSED APPROACH: Climb to 3000 direct HUPOR and hold.

AWOS-3T 118.425	JACKSONVILLE APP CON 118.6 251.15	UNICOM 122.975 (CTAF) 0
---------------------------	---	-----------------------------------



CATEGORY	A	B	C	D
LNNAV MDA	480-1	404 (500-1)	480-1¼ 404 (500-1¼)	NA
CIRCLING	520-1 444 (500-1)	640-1 564 (600-1)	840-2¼ 764 (800-2¼)	NA

HIRL Rwy 5-23 0
MIRL Rwy 14-32 0
REIL Rwys 5, 14, 23, and 32 0

SE-3, 28 NOV 2024 to 26 DEC 2024

SE-3, 28 NOV 2024 to 26 DEC 2024