

LOC I-LKU <b>108.55</b>	APP CRS <b>272°</b>	Rwy Idg <b>4300</b> TDZE <b>494</b> Apt Elev <b>494</b>
----------------------------	------------------------	---

# LOC RWY 27

LOUISA COUNTY/FREEMAN FLD (LKU)

DME required.

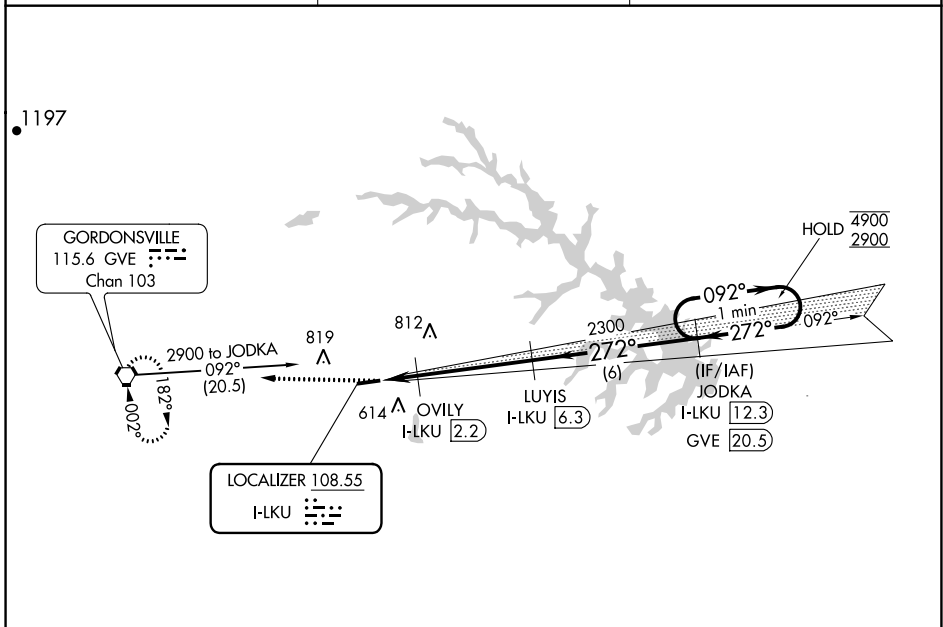
**▽** **△** NA Circling NA north of Rwy 9-27. When local altimeter setting not received, use Orange altimeter setting and increase all MDA 40 feet. VDP NA when using Orange altimeter setting.

**MISSED APPROACH:**  
Climb to 2900 direct  
GVE VORTAC and hold.

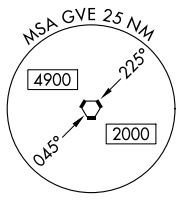
AWOS-3  
**119.475**

POTOMAC APP CON  
**132.85 323.125**

UNICOM  
**122.975 (CTAF) 0**



ELEV <b>494</b>	TDZE <b>494</b>
-----------------	-----------------



2900 GVE I-LKU [0.8] I-LKU [1.7]	OVI I-LKU [2.2]	LUY I-LKU [6.3]	JODKA I-LKU [12.3]		One Minute Holding Pattern 4900 2900
			272° → 4900 ← 272°		
980 ≤ 3.00° TCH 40			2300		
0.9 NM	0.5 NM	4.2 NM	6 NM		
CATEGORY	A	B	C	D	
S-LOC 27	820-1 326 (400-1)		NA		
CIRCLING	900-1 406 (500-1)	960-1 466 (500-1)	NA		

NE-3, 28 NOV 2024 to 26 DEC 2024

NE-3, 28 NOV 2024 to 26 DEC 2024