

|  |                        |                             |   |
|--|------------------------|-----------------------------|---|
| WAAS<br>CH <b>45922</b><br><b>W18A</b> | APP CRS<br><b>175°</b> | Rwy Idg<br>TDZE<br>Apt Elev | <b>4001</b><br><b>532</b><br><b>532</b> |
|--|------------------------|-----------------------------|---|

# RNAV (GPS) RWY 18

LOCKHART MUNI (50R)

RNP APCH.

**▽** Baro-VNAV NA. Use San Marcos altimeter setting, when not received,  
**△** NA use Austin-Bergstrom Intl altimeter setting and increase all DA 16 feet,  
all MDA 20 feet; increase LNAV Cat B visibility ¼ SM.

MISSED APPROACH: Climb to 4000  
direct EDIVE and on track 095° to  
SEEDS and hold.

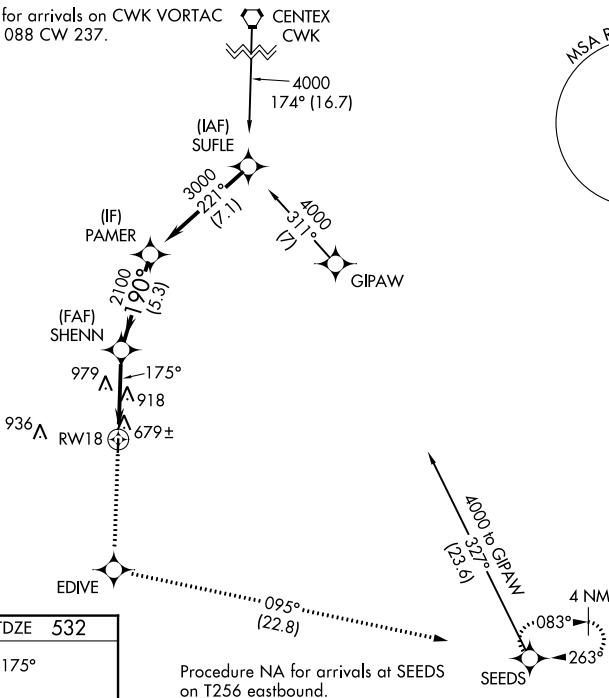
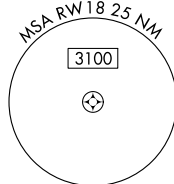
AUSTIN APP CON  
**120.875 270.25**

UNICOM  
**122.8 (CTAF) 0**

Procedure NA for arrivals on CWK VORTAC  
airway radials 088 CW 237.

CENTEX  
CWK

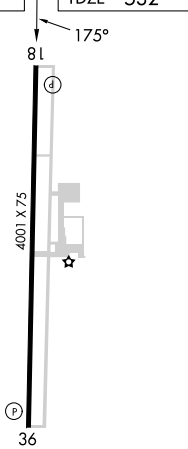
**A**1615



SC-3, 28 NOV 2024 to 26 DEC 2024

SC-3, 28 NOV 2024 to 26 DEC 2024

|          |          |
|----------|----------|
| ELEV 532 | TDZE 532 |
|----------|----------|



Procedure NA for arrivals at SEEDS  
on T256 eastbound.

|              |                     |                    |                       |   |
|--------------|---------------------|--------------------|-----------------------|---|
| 4000         | EDIVE               | tr 095°            | SEEDS                 | VGSI and RNAV glidepath not coincident<br>(VGSI Angle 3.50/TCH 24). |
| ↑            | ✧                   |                    | ✧                     |   |
| SHENN 2100   |                     | PAMER 3000         |                       |   |
| RWY 18       |                     | GP 3.00°<br>TCH 40 |                       |   |
| 4.8 NM       |                     | 5.3 NM             |                       |   |
| CATEGORY     | A                   | B                  | C                     | D   |
| LPV DA       | 815-1 283 (300-1)   |                    |                       | NA  |
| LNAV/VNAV DA | 883-1¼ 351 (400-1¼) |                    |                       | NA  |
| LNAV MDA     | 1260-1 728 (800-1)  |                    | 1260-2<br>728 (800-2) | NA  |