

WAAS CH 99740 W19A	APP CRS 187°	Rwy Idg TDZE Apt Elev	6200 1303 1303
--	------------------------	-----------------------------	---

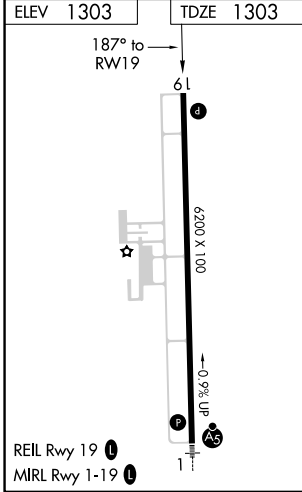
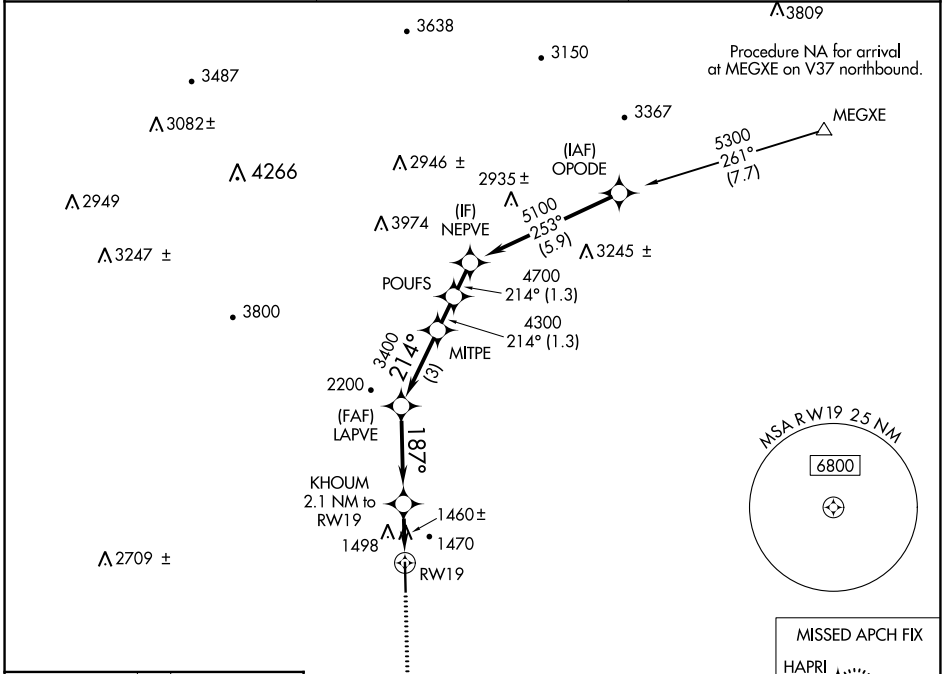
RNAV (GPS) RWY 19

WILKES COUNTY (UKF)

⚠ DME/DME RNP-0.3 NA. VDP NA when using Hickory altimeter setting. When local altimeter setting not received, use Hickory altimeter setting and increase all MDAs 100 feet and LP and LNAV visibility Cats C/D ¼ SM and increase Circling visibility Cat C ½ SM. Rwy 19 helicopter visibility reduction below ¾ SM NA.

MISSED APPROACH: Climb to 5000 direct HAPRI and hold, continue climb-in-hold to 5000.

AWOS-3 126.625	ATLANTA CENTER 125.15 263.0	UNICOM 122.7 (CTAF) 0
--------------------------	---------------------------------------	---------------------------------



5000	HAPRI	VGSI and descent angles not coincident (VGSI Angle 3.00/TCH 47).	NEPVE	
↑				
	KHOUM	LAPVE	POUFS	
	2.1 NM to RW19	MITPE	5100	
	1.2 NM to RW19	3400	4700	
	2100	4300	214°	
	187°			
	1.2	0.9	3.5 NM	
			3 NM	
			1.3 NM	
			1.3 NM	
CATEGORY	A	B	C	D
LP MDA	1720-1	417 (500-1)	1720-1½	417 (500-1½)
LNAV MDA	1760-1	457 (500-1)	1760-1¾	457 (500-1¾)
C CIRCLING	1800-1	1880-1	1880-1½	2240-3
	497 (500-1)	577 (600-1)	577 (600-1½)	937 (1000-3)

SE-2, 28 NOV 2024 to 26 DEC 2024

SE-2, 28 NOV 2024 to 26 DEC 2024