

APP CRS 311°	Rwy Idg TDZE Apt Elev	N/A N/A 5034
------------------------	-----------------------------	---------------------------

RNAV (GPS)-B

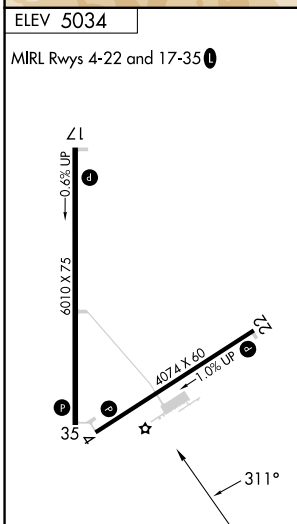
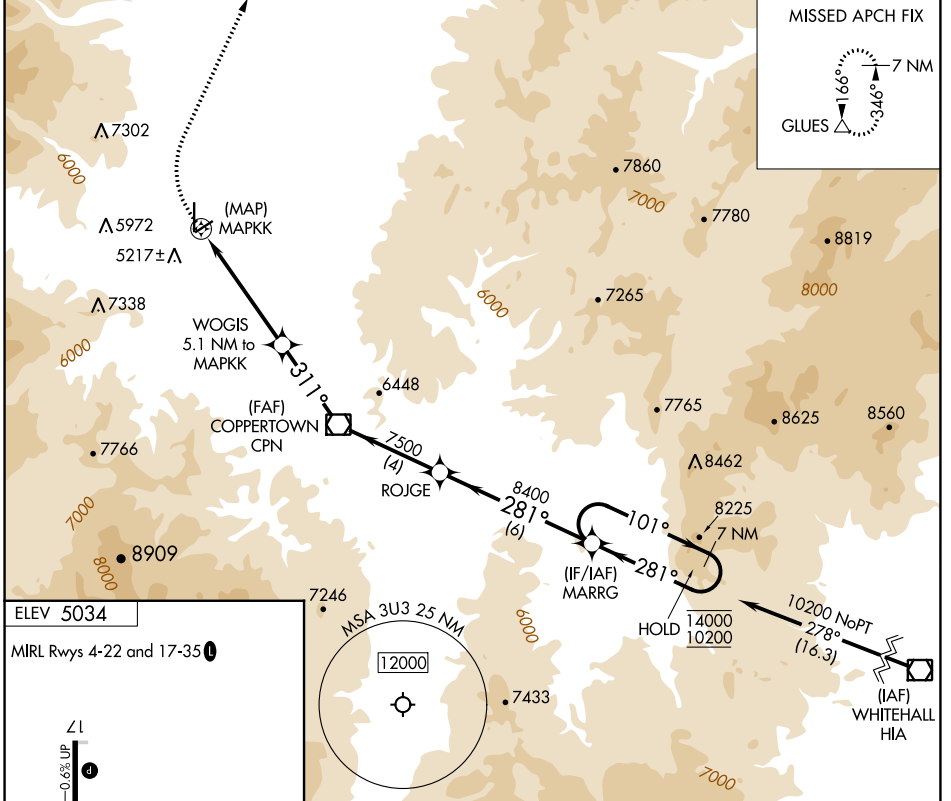
BOWMAN FLD (3U3)

RNP APCH - GPS.

▲ NA When local altimeter setting not received, use Butte altimeter setting and increase all MDAs 120 feet.
❄ -25°C Circling NA for Cats C and D west of Rwy 17-35.

MISSED APPROACH: Climbing right turn to 9200 direct GLUES and hold.

AWOS-3PT 124.175	SALT LAKE CENTER 132.4 338.3	UNICOM 122.8 (CTAF) 0
----------------------------	--	---------------------------------



9200	GLUES	MARRG	7 NM Holding Pattern
	▲		
	WOGIS 5.1 NM to MAPKK	ROJGE	101° → 14000
	MAPKK	8400	← 281° 10200
	6620	7500	
	5.1 NM	3.5 NM	4 NM
CATEGORY	A	B	C
CIRCLING	6120-1¼ 1086 (1100-1¼)	6240-1½ 1206 (1300-1½)	6240-3 1206 (1300-3)
		D	
		6640-3 1606 (1700-3)	

NW-1, 28 NOV 2024 to 26 DEC 2024

NW-1, 28 NOV 2024 to 26 DEC 2024