

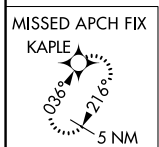
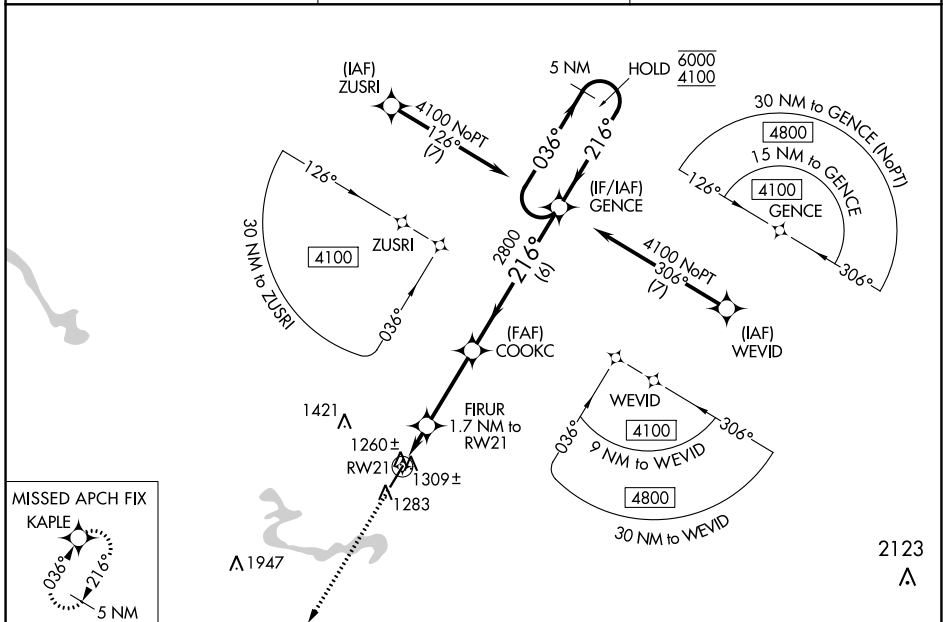
WAAS CH 77801 W21A	APP CRS 216°	Rwy Idg TDZE 1222 Apt Elev 1222	5051
--	------------------------	---	-------------

RNAV (GPS) RWY 21

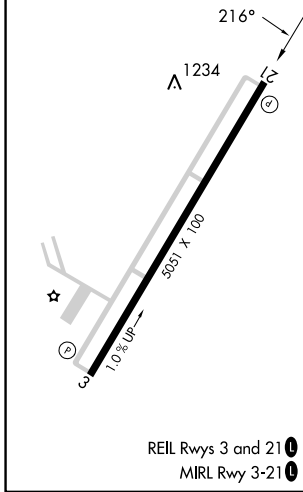
BIG SANDY RGNL (SJS)

RNP APCH - GPS.		MISSED APPROACH: Climb to 4300 direct KAPLE and hold.
<p>▼ Circling Rwy 3 NA at night. For uncompensated Baro-VNAV systems, LNAV/VNAV NA below -17°C or above 54°C.</p>		

AWOS-3 120.175	HUNTINGTON APP CON 119.75 270.1	UNICOM 123.05 (CTAF) 1
--------------------------	---	----------------------------------



ELEV 1222	TDZE 1222
-----------	-----------



4300 KAPLE	VGSI and RNAV glidepath not coincident (VGSI Angle 3.00/TCH 25).		5 NM Holding Pattern	
↑	FIRUR 1.7 NM to RW21	COOKC 2800	GENCE	
1 NM to RW21	1800	2800	6000 / 4100	
0.7 NM	3.1 NM	6 NM	GP 3.00° TCH 40	
CATEGORY	A	B	C	D
LPV DA		1472-3/4	250 (300-3/4)	
LNAV/VNAV DA		1520-7/8	298 (300-7/8)	
LNAV MDA		1560-1	338 (400-1)	
CIRCLING	1740-1	518 (600-1)	1920-2 698 (700-2)	2020-2 1/2 798 (800-2 1/2)

SE-1, 28 NOV 2024 to 26 DEC 2024

SE-1, 28 NOV 2024 to 26 DEC 2024