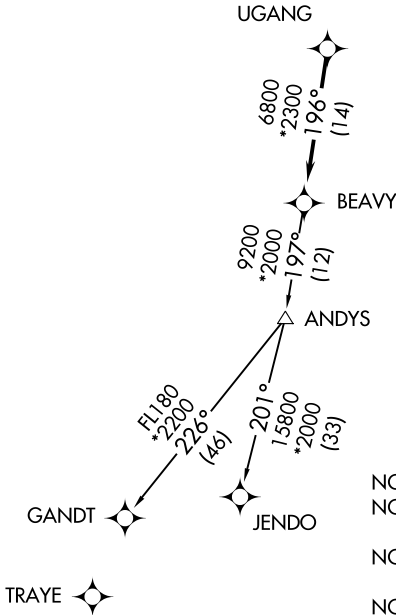
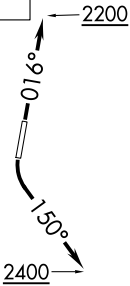
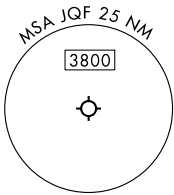


# BEAVY SIX DEPARTURE (RNAV)

CHARLOTTE DEP CON  
128.325 307.8  
ATIS ★  
133.675  
CLNC DEL  
118.55  
CLNC DEL (when twr closed)  
127.25  
GND CON  
121.85  
CONCORD TOWER ★  
134.65 (CTAF)  
UNICOM  
122.95

RNAV 1-DME/DME/IRU or GPS.  
RADAR required.

**TOP ALTITUDE:  
3000**



### TAKEOFF MINIMUMS

Rwy 2: Standard.  
Rwy 20: Standard with minimum climb of 320' per NM to 2400.

- NOTE: For turbo jets only.
- NOTE: If unable to accept climb rates, advise ATC on initial contact.
- NOTE: Transponder code will be issued via PDC or Charlotte CLNC DEL.
- NOTE: Upon reaching 10000 MSL, accelerate to and maintain 280K, if unable advise ATC.

NOTE: Chart not to scale.

## DEPARTURE ROUTE DESCRIPTION

**TAKEOFF RUNWAY 2:** Climb on heading 016° to 2200, then on heading assigned by ATC, thence. . . .

**TAKEOFF RUNWAY 20:** Climbing left turn heading 150° to 2400, then on heading assigned by ATC, thence. . . .

. . . .on RADAR vectors to UGANG, then on track 196° to BEAVY. Then on assigned transition. Maintain 3000, expect clearance to filed altitude within 10 minutes after departure.

- GANDT TRANSITION (BEAVY6.GANDT)
- JENDO TRANSITION (BEAVY6.JENDO)

# BEAVY SIX DEPARTURE (RNAV)

SE-2, 28 NOV 2024 to 26 DEC 2024

SE-2, 28 NOV 2024 to 26 DEC 2024