

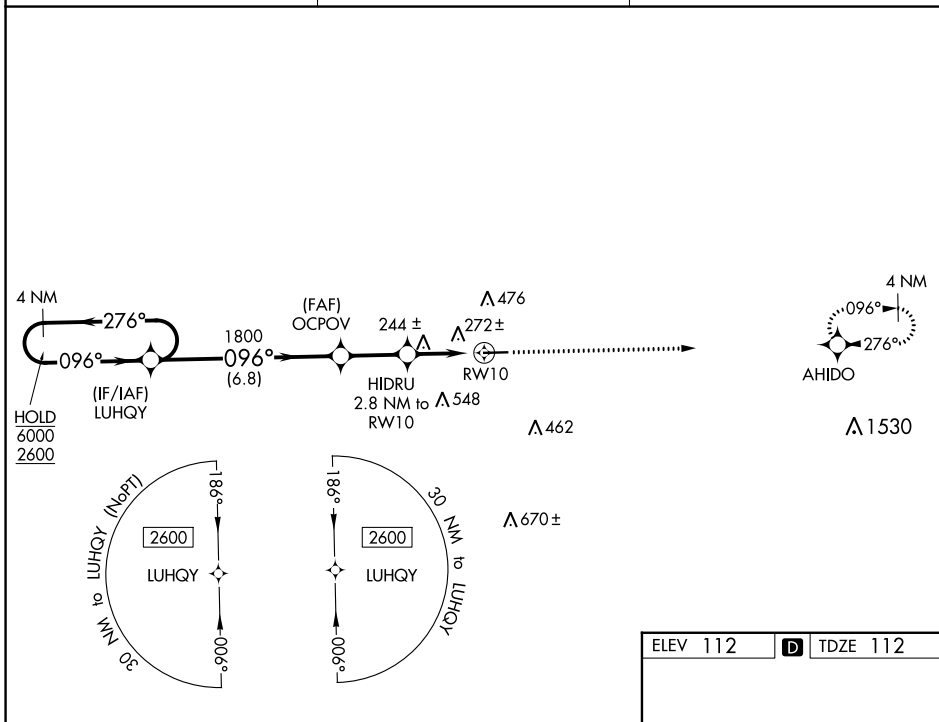
WAAS CH 45914 W10A	APP CRS 096°	Rwy Idg TDZE Apt Elev	5001 112 112
--	------------------------	-----------------------------	---

RNAV (GPS) RWY 10

CLAXTON-EVANS COUNTY (C'WV)

RNP APCH GPS.	MISSED APPROACH: Climb to 2600 direct AHIDO and hold.
<p>▼ Straight-In Rwy 10 NA at night.</p> <p>▲ Rwy 10 helicopter visibility reduction below 1 SM NA.</p>	

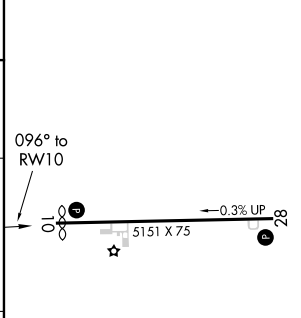
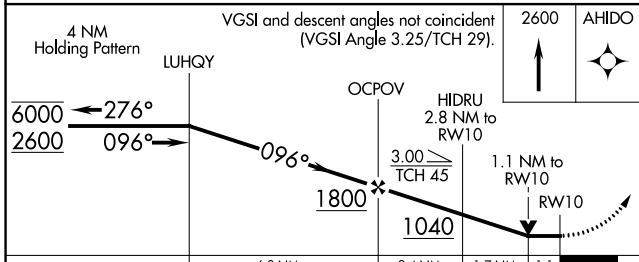
AWOS-3 120.075	JACKSONVILLE CENTER 132.925 363.2	UNICOM 122.8 (CTAF) 1
--------------------------	---	--



SE-4, 28 NOV 2024 to 26 DEC 2024

SE-4, 28 NOV 2024 to 26 DEC 2024

ELEV 112	D TDZE 112
----------	-------------------



CATEGORY	A	B	C	D
LP MDA	500-1	388 (400-1)	500-1 $\frac{1}{8}$	388 (400-1 $\frac{1}{8}$)
LNAV MDA	540-1	428 (500-1)	540-1 $\frac{1}{4}$	428 (500-1 $\frac{1}{4}$)
C CIRCLING	580-1 468 (500-1)	780-1 668 (700-1)	860-2 $\frac{1}{4}$ 748 (800-2 $\frac{1}{4}$)	860-2 $\frac{1}{2}$ 748 (800-2 $\frac{1}{2}$)

MIRL Rwy 10-28 **1**
REIL Rws 10 and 28 **1**