

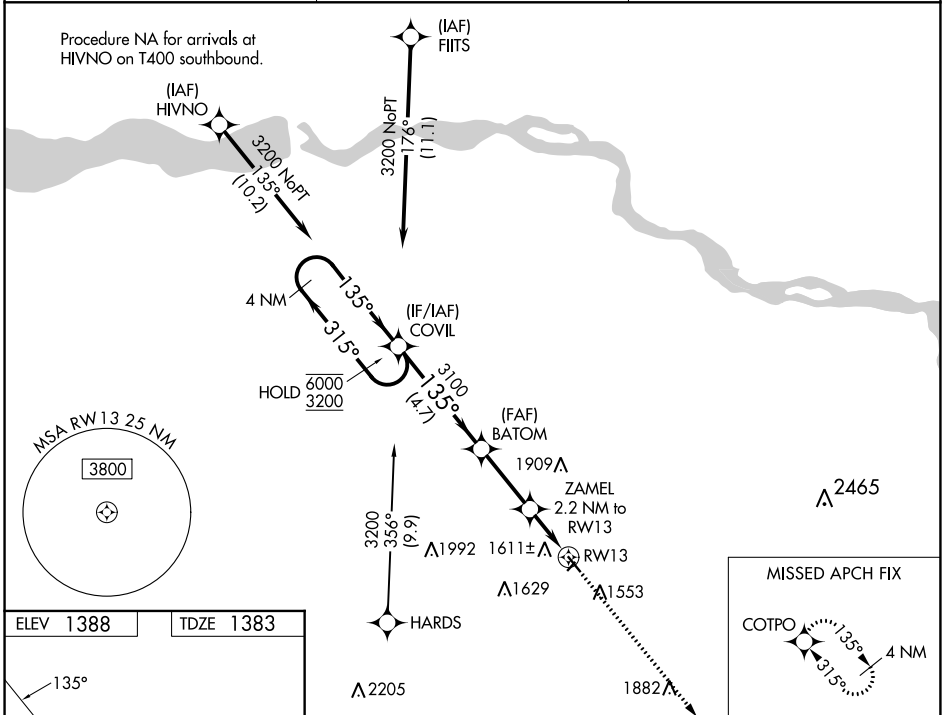
WAAS CH <b>53722</b> <b>W13A</b>	APP CRS <b>135°</b>	Rwy Idg TDZE Apt Elev	<b>3950</b> <b>1383</b> <b>1388</b>
--	------------------------	-----------------------------	---

# RNAV (GPS) RWY 13

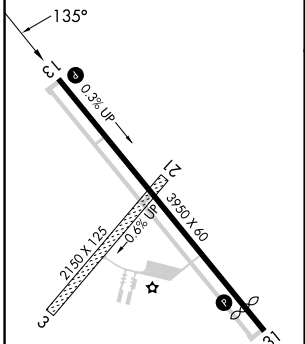
HARTINGTON MUNI/BUD BECKER FLD (ØB4)

RNP APCH - GPS.	<p>▼ Rwy 13 helicopter visibility reduction below 3/4 SM NA. Baro-VNAV NA.</p> <p>▲ NA Use YKN altimeter setting; when not received, use LCG altimeter setting and increase LPV DA to 1831 feet. Increase LNAV/VNAV DA to 2230 feet. Increase LNAV MDA 20 feet.</p>	MISSED APPROACH: Climb to 3200 direct COTPO and hold.
-----------------	---	---

YKN AWOS-3PT <b>119.05</b>	MINNEAPOLIS CENTER <b>125.025 235.625</b>	CTAF <b>122.90</b>
-------------------------------	--	-----------------------



ELEV 1388	TDZE 1383
-----------	-----------



4 NM Holding Pattern		VGS1 and RNAV glidepath not coincident (VGS1 Angle 4.00/TCH 52).		3200	COTPO
6000 ← 315°		3100		↑	◆
3200 → 135°		3100			
GP 3.20° TCH 45		3100		RW13	
		4.7 NM		2.8 NM	
				2.2 NM	
				RW13	
CATEGORY	A	B	C	D	
LPV DA	1824-1 3/8	441 (500-1 3/8)			NA
LNAV/VNAV DA	2223-2 1/2	840 (900-2 1/2)			NA
LNAV MDA	2000-1	617 (700-1)			NA

NC-2, 28 NOV 2024 to 26 DEC 2024

NC-2, 28 NOV 2024 to 26 DEC 2024