

| | | | |
|--|------------------------|-----------------------------|---|
| WAAS CH 77726 W02A | APP CRS 019° | Rwy Idg TDZE Apt Elev | 4001 966 972 |
|--|------------------------|-----------------------------|---|

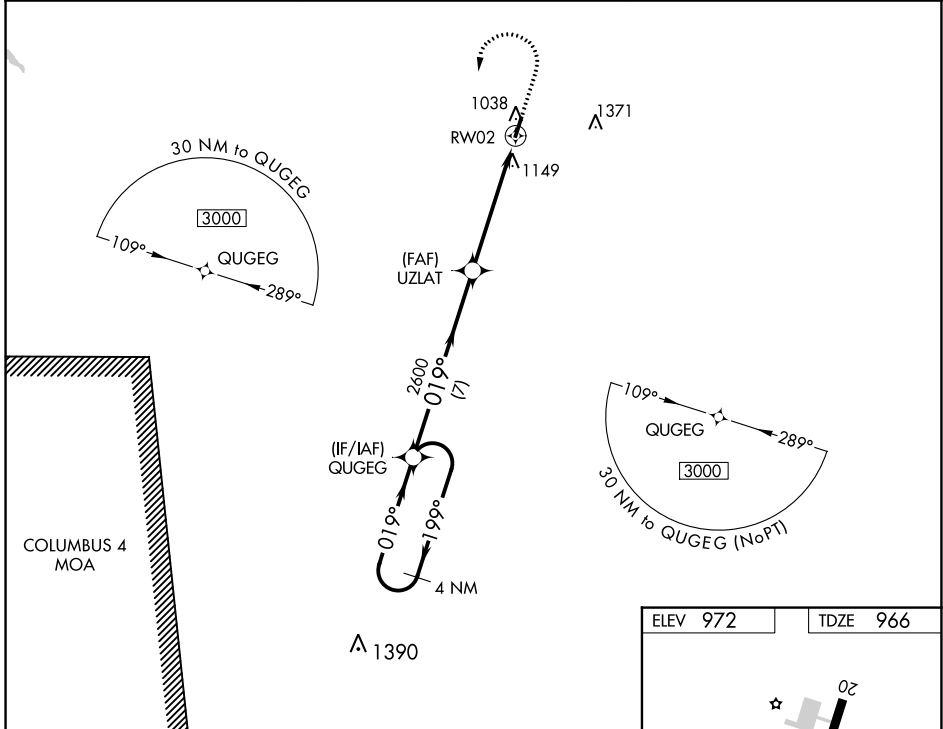
RNAV (GPS) RWY 2

PAUL BRIDGES FLD (ØM3)

▽ DME/DME RNP-0.3 NA. Use Lawrenceburg altimeter setting, when not received, use Muscle Shoals altimeter setting and increase all MDA 120 feet; increase LP and LNAV Cat C visibility ½ SM and Circling Cat C visibility ½ SM. Procedure NA at night. Rwy 2, 20 helicopter visibility reduction NA.

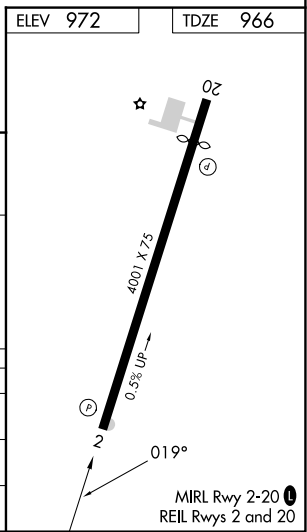
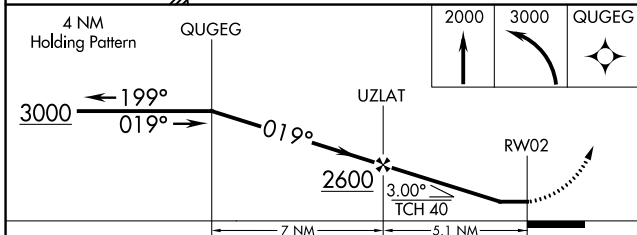
MISSED APPROACH: Climb to 2000 then climbing left turn to 3000 direct QUGEG and hold.

| | | |
|------------------------------|--|---------------------------------|
| 2M2 AWOS-3 120.175 | MEMPHIS CENTER 125.85 379.25 | UNICOM 122.8 (CTAF) Ø |
|------------------------------|--|---------------------------------|



SE-1, 28 NOV 2024 to 26 DEC 2024

SE-1, 28 NOV 2024 to 26 DEC 2024



| CATEGORY | A | B | C | D |
|----------|--------|-------------|-------------------------|----|
| LP MDA | 1520-1 | 554 (600-1) | 1520-1½ 554 (600-1½) | NA |
| LNAV MDA | 1520-1 | 554 (600-1) | 1520-1½ 554 (600-1½) | NA |
| CIRCLING | 1580-1 | 608 (700-1) | 1740-2¼ 768 (800-2¼) | NA |