

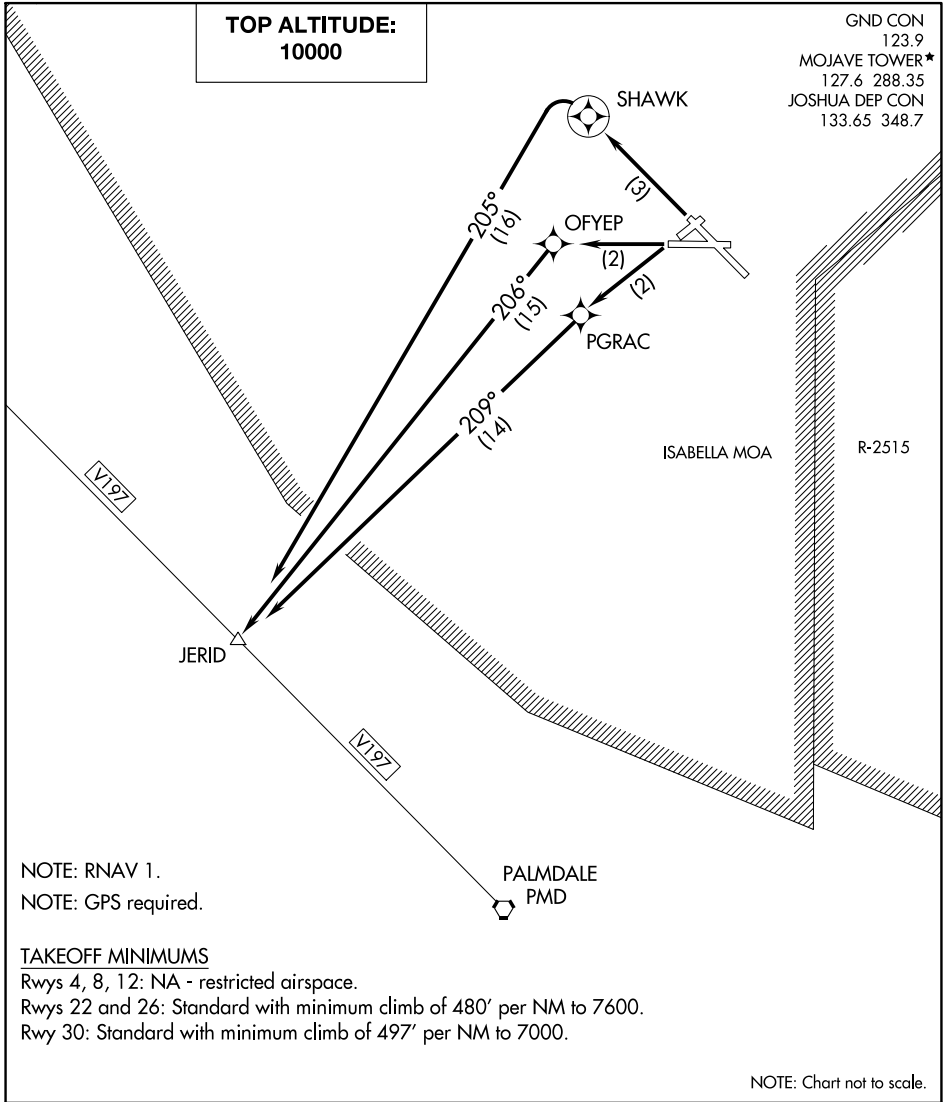
(JERID5.JERID) 22195

# JERID FIVE DEPARTURE (RNAV)

MOJAVE AIR & SPACE PORT/RUTAN FLD (MHV)  
AL-9353 (FAA)  
MOJAVE, CALIFORNIA

**TOP ALTITUDE:  
10000**

GND CON 123.9  
MOJAVE TOWER\* 127.6 288.35  
JOSHUA DEP CON 133.65 348.7



SW-3, 28 NOV 2024 to 26 DEC 2024

SW-3, 28 NOV 2024 to 26 DEC 2024

NOTE: RNAV 1.  
NOTE: GPS required.

### TAKEOFF MINIMUMS

Rwys 4, 8, 12: NA - restricted airspace.  
Rwys 22 and 26: Standard with minimum climb of 480' per NM to 7600.  
Rwy 30: Standard with minimum climb of 497' per NM to 7000.

NOTE: Chart not to scale.

### DEPARTURE ROUTE DESCRIPTION

TAKEOFF RUNWAY 22: Climb direct PGRAC, then on track 209° to JERID, thence. . . .  
TAKEOFF RUNWAY 26: Climb direct OFYEP, then on track 206° to JERID, thence. . . .  
TAKEOFF RUNWAY 30: Climb direct SHAWK, then climbing left turn on track 205° to JERID, thence. . . .  
. . . .maintain 10000, expect filed altitude 10 minutes after departure.

# JERID FIVE DEPARTURE (RNAV)

(JERID5.JERID) 15SEP16

MOJAVE, CALIFORNIA  
MOJAVE AIR & SPACE PORT/RUTAN FLD (MHV)