

WAAS CH 93602 W20A	APP CRS 196°	Rwy Idg 4001 TDZE 88 Apt Elev 98
--	------------------------	---

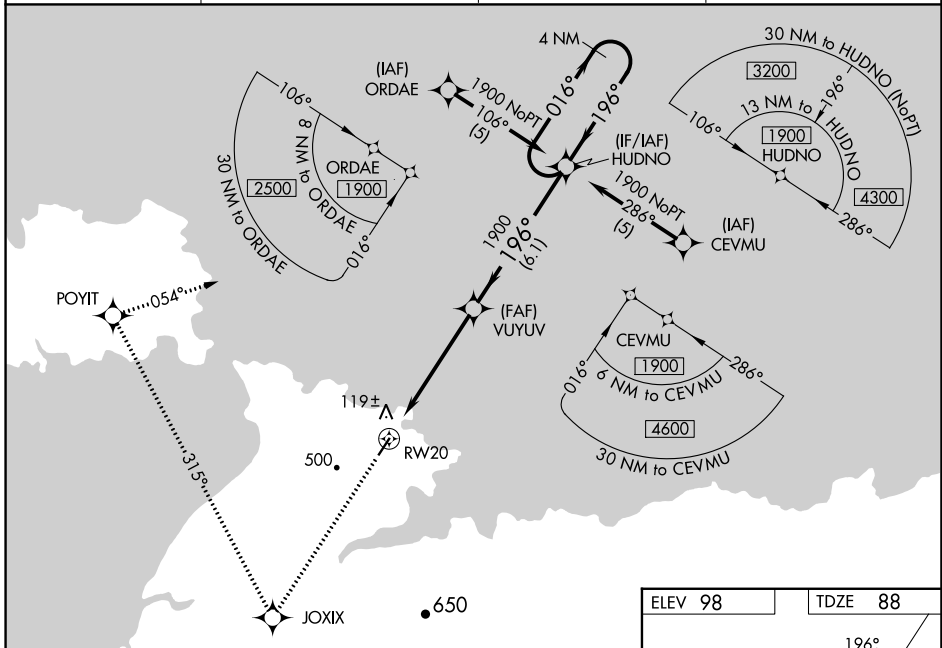
RNAV (GPS) RWY 20

ST MICHAEL (SMK) (P.AMK)

▼ If local altimeter setting not received, use Unalakeet altimeter setting and increase all DAs/MDAs 120 feet. Circling NA west of Rwy 2-20.
▲ DME/DME RNP-0.3 NA. Baro-VNAV NA when using Unalakeet altimeter setting. For uncompensated Baro-VNAV systems, LNAV/VNAV NA below -25°C (-13°F) or above 48°C (120°F).
▼ VDP NA with Unalakeet altimeter setting.

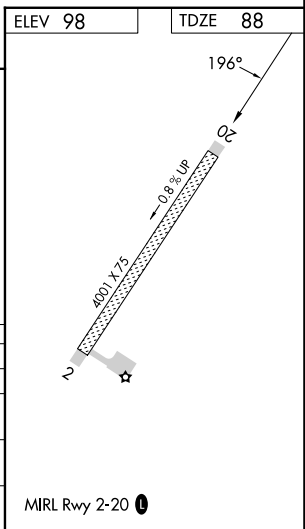
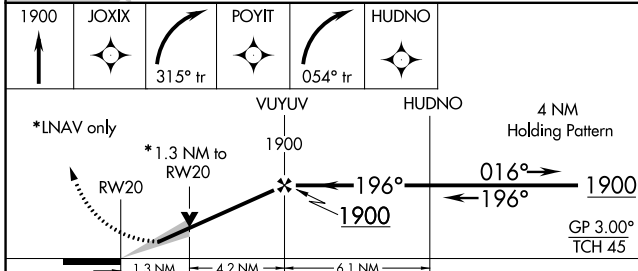
MISSED APPROACH: Climb to 1900 direct JOXIX and right turn via 315° track to POYIT and right turn via 054° track to HUDNO and hold.

AWOS-3P 119.275	ANCHORAGE CENTER 135.7	NOME RADIO 122.3	UNICOM 122.8 (CTAF) ①
---------------------------	----------------------------------	----------------------------	---------------------------------



AK, 31 OCT 2024 to 26 DEC 2024

AK, 31 OCT 2024 to 26 DEC 2024



CATEGORY	A	B	C	D
LPV DA		338-1	250 (300-1)	
LNAV/VNAV DA		452-1¼	364 (400-1¼)	
LNAV MDA	520-1	432 (500-1)	520-1¼ 432 (500-1¼)	520-1½ 432 (500-1½)
CIRCLING	520-1 422 (500-1)	560-1 462 (500-1)	560-1½ 462 (500-1½)	660-2 562 (600-2)