

STIGLER, OKLAHOMA

AL-9467 (FAA)

24305

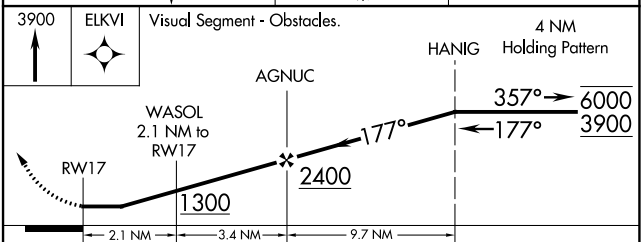
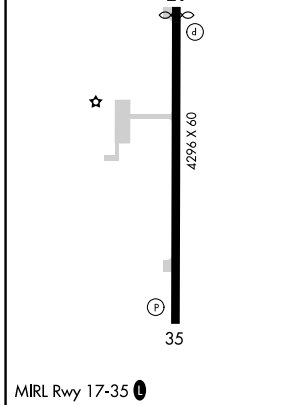
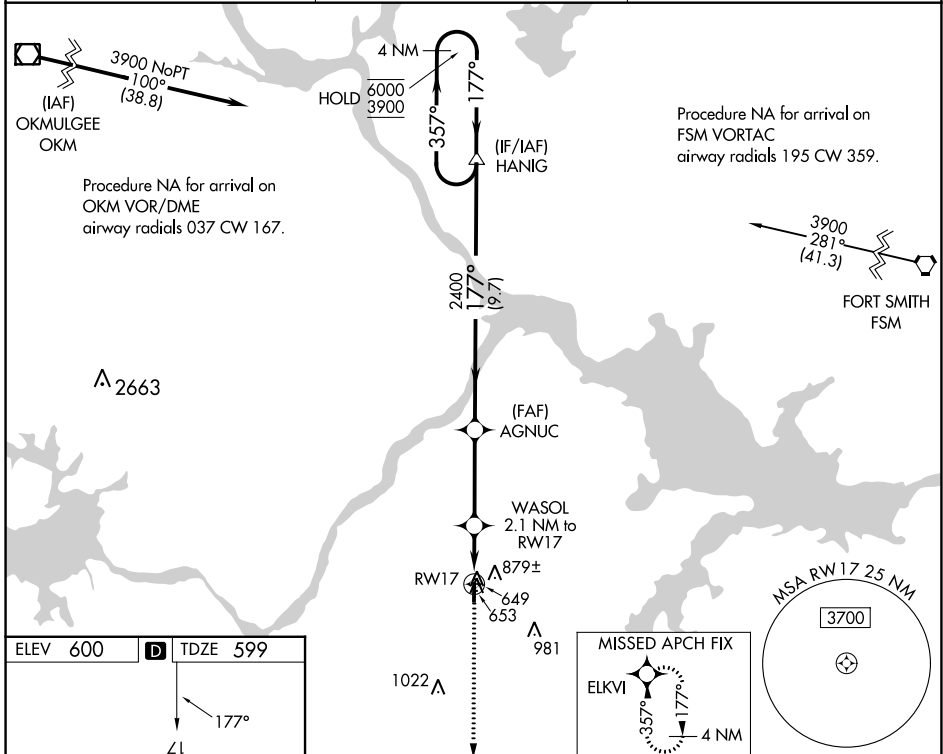
WAAS CH 65822 W17A	APP CRS 177°	Rwy Idg TDZE Apt Elev	4200 599 600
---------------------------------	------------------------	-----------------------------	---

RNAV (GPS) RWY 17

STIGLER RGNL (GZL)

RNP APCH. ▼ Rwy 17 helicopter visibility reduction below 1 SM NA. Procedure NA at night.	MISSED APPROACH: Climb to 3900 direct ELKVI and hold, continue climb-in-hold to 3900.
--	--

AWOS-3PT 118.575	FORT WORTH CENTER 132.2 338.35	CTAF 122.90
----------------------------	--	-----------------------



CATEGORY	A	B	C	D
LP MDA	900-1	301 (300-1)		NA
LNAV MDA	1020-1	421 (500-1)		NA
CIRCLING	1180-1	580 (600-1)		NA

STIGLER, OKLAHOMA
Orig-B 03JAN19

35°17'N-95°06'W

RNAV (GPS) RWY 17

SC-1, 28 NOV 2024 to 26 DEC 2024

SC-1, 28 NOV 2024 to 26 DEC 2024