

LOC I-UTA 110.95 Chan 46 (Y)	APP CRS 347°	Rwy Idg 8500 TDZE 194 Apt Elev 194
--	------------------------	---

ILS or LOC RWY 35

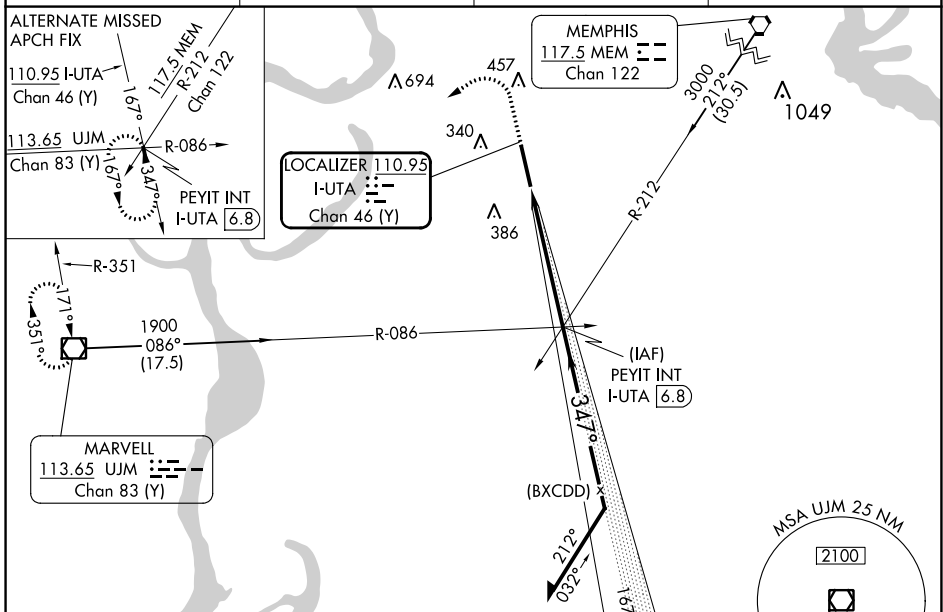
TUNICA MUNI (UTA)

VDP NA with Memphis altimeter setting. When local altimeter not received, use Memphis altimeter setting and increase S-ILS 35 DA to 480 and all MDA 100 feet, increase S-LOC 35 Cats C and D and Circling Cat C visibility ¼ mile. For inoperative MALSR when using Memphis altimeter setting increase S-ILS 35 all Cats visibility to 1 mile.

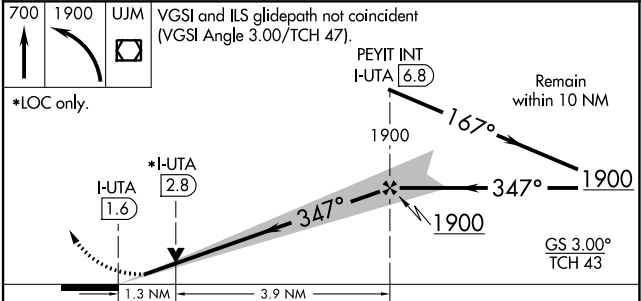
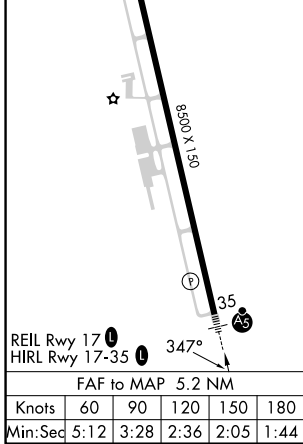
MALSR
A5

MISSED APPROACH: Climb to 700 then climbing left turn to 1900 direct UJM VOR/DME and hold.

AWOS-3 118.075	MEMPHIS APP CON 119.1 291.6	CLNC DEL 118.9	UNICOM 123.0 (CTAF)
--------------------------	---------------------------------------	--------------------------	-------------------------------



ELEV 194	TDZE 194
-----------------	-----------------



CATEGORY	A	B	C	D
S-ILS 35	394-1/2 200 (200-1/2)			
S-LOC 35	640-1/2 446 (500-1/2)		640-7/8 446 (500-7/8)	
CIRCLING	680-1 486 (500-1)	740-1 546 (600-1)	760-1/2 566 (600-1/2)	760-2 566 (600-2)

SC-4, 28 NOV 2024 to 26 DEC 2024

SC-4, 28 NOV 2024 to 26 DEC 2024