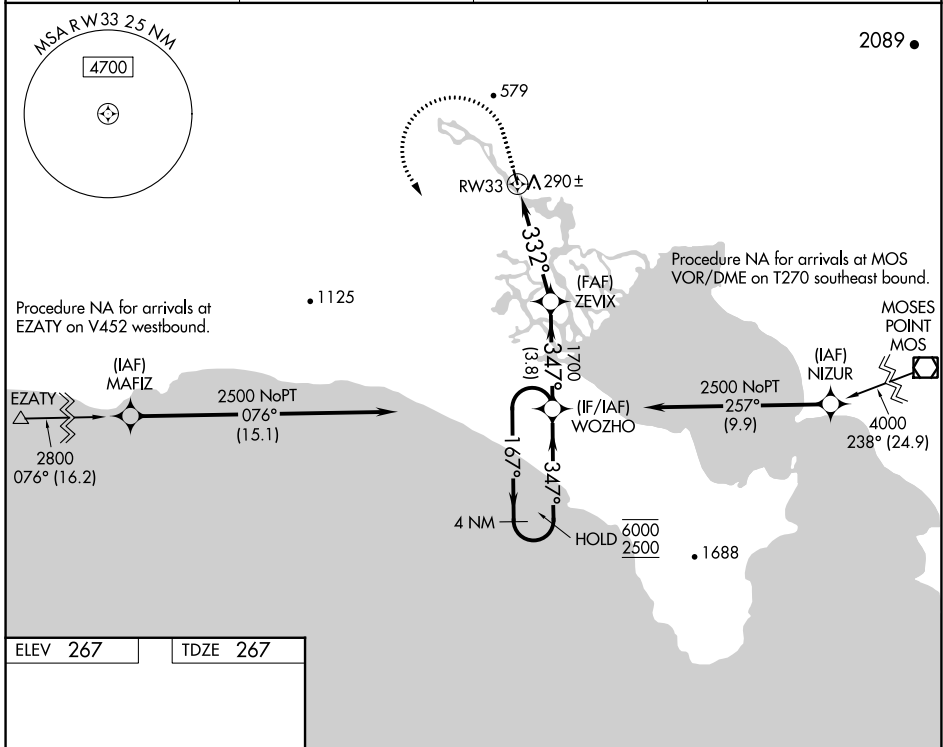


WAAS CH <b>97743</b> <b>W33A</b>	APP CRS <b>332°</b>	Rwy ldg <b>3000</b> TDZE <b>267</b> Apt Elev <b>267</b>
--	------------------------	---

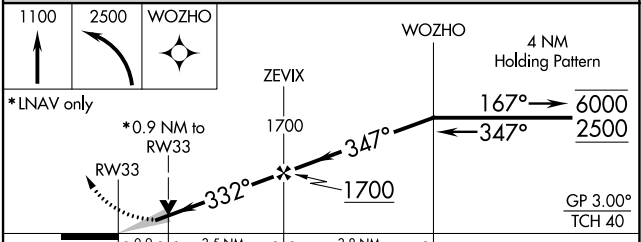
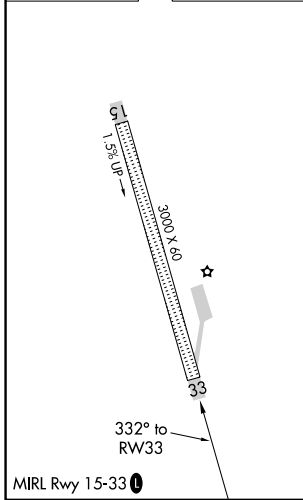
# RNAV (GPS) RWY 33

WHITE MOUNTAIN (WMO) (P A W M)

RNP APCH.		MISSED APPROACH: Climb to 1100 then climbing left turn to 2500 direct WOZHO and hold.	
Circling NA northeast of Rwy 15-33.			
AWOS-3P <b>121.45</b>	ANCHORAGE CENTER <b>133.3 290.4</b>	NOME RADIO <b>122.05</b>	CTAF <b>122.9 0</b>



ELEV 267	TDZE 267
----------	----------



CATEGORY	A	B	C	D
LPV DA		517-1 250 (300-1)		NA
LNAV MDA		600-1 333 (400-1)		NA
CIRCLING	620-1 353 (400-1)	720-1 453 (500-1)	1080-2½ 813 (900-2½)	NA

AK, 31 OCT 2024 to 26 DEC 2024

AK, 31 OCT 2024 to 26 DEC 2024