

|                        |                        |
|------------------------|------------------------|
| APP CRS<br><b>011°</b> | Rwy Idg<br><b>5003</b> |
|                        | TDZE<br><b>62</b>      |
|                        | Apt Elev<br><b>62</b>  |

# RNAV (GPS) RWY 1

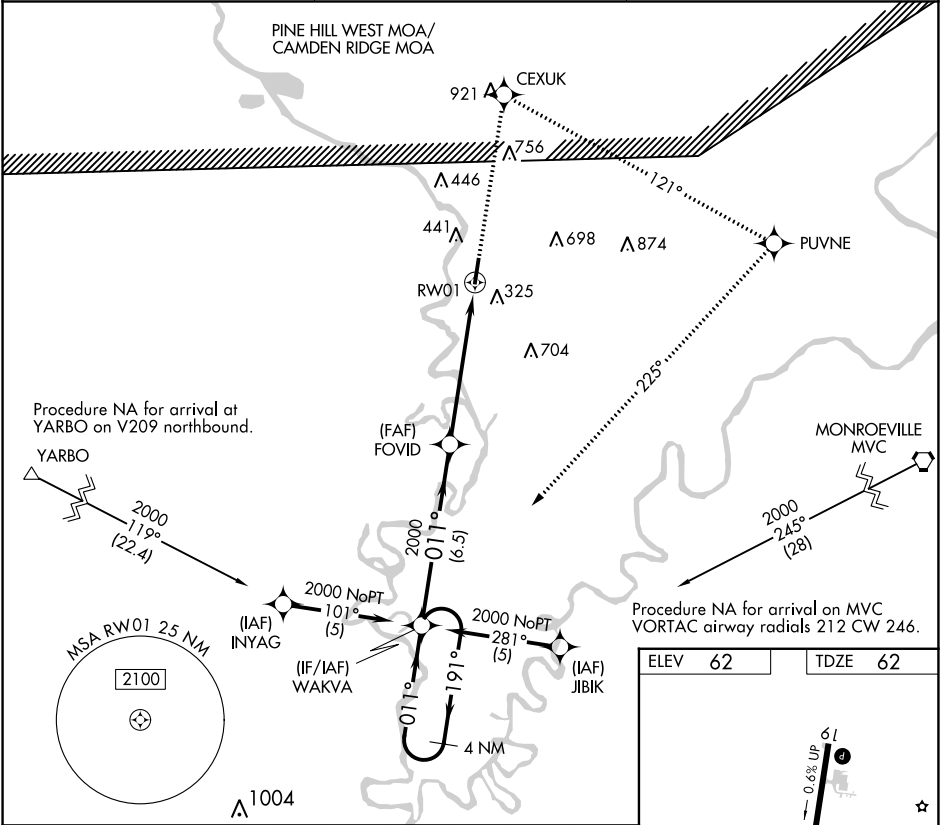
JACKSON MUNI (4R3)

RNP APCH.

Procedure NA at night. Rwy 1 helicopter visibility reduction below 1 SM NA. Use Evergreen altimeter setting, when not received, use Mobile Rgnl altimeter setting and increase all MDA 20 feet.

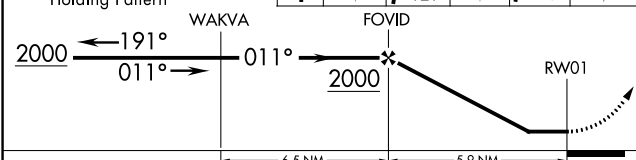
MISSED APPROACH: Climb to 2000 direct CEXUK and right turn on track 121° to PUVNE and right turn on track 225° to WAKVA and hold.

|                            |   |                       |
|----------------------------|---|-----------------------|
| GZH ASOS<br><b>133.425</b> | HOUSTON CENTER<br><b>127.65 285.475</b> | CTAF<br><b>122.90</b> |
|----------------------------|---|-----------------------|

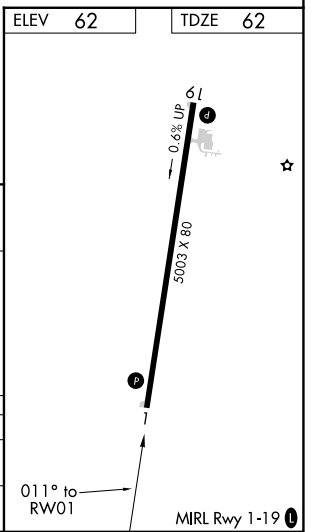


Visual Segment - Obstacles. 2000 CEXUK tr 121° PUVNE tr 225° WAKVA

4 NM Holding Pattern



| CATEGORY | A                    | B                      | C                       | D                       |
|----------|----------------------|------------------------|-------------------------|-------------------------|
| LNVA MDA | 900-1<br>838 (900-1) | 900-1¼<br>838 (900-1¼) | 900-2½<br>838 (900-2½)  | 900-2¾<br>838 (900-2¾)  |
| CIRCLING | 980-1 ¼              | 918 (1000-1¼)          | 980-2¾<br>918 (1000-2¾) | 1140-3<br>1078 (1100-3) |



SE-4, 28 NOV 2024 to 26 DEC 2024

SE-4, 28 NOV 2024 to 26 DEC 2024