

|  |                        |   |             |
|--|------------------------|---|-------------|
| WAAS<br>CH <b>93902</b><br><b>W13A</b> | APP CRS<br><b>126°</b> | Rwy Idg<br>TDZE <b>1124</b><br>Apt Elev <b>1126</b> | <b>5500</b> |
|--|------------------------|---|-------------|

# RNAV (GPS) RWY 13

WILLMAR MUNI/JOHN L RICE FLD (BDH)

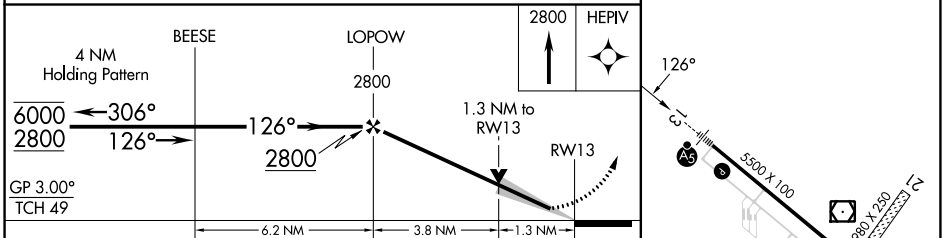
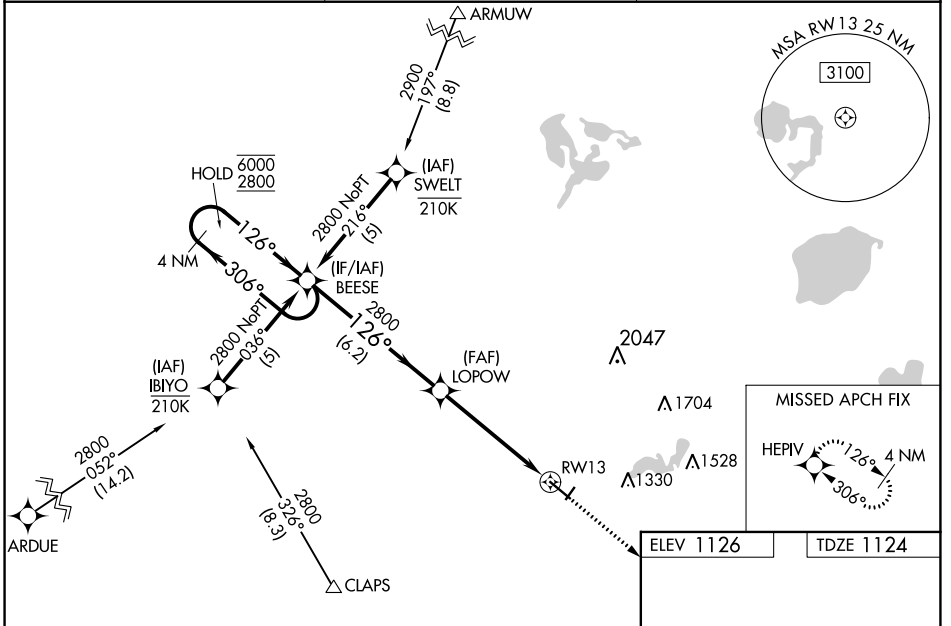
RNP APCH - GPS.

**⚠** For uncompensated Baro-VNAV systems, LNAV/VNAV NA below -17°C or above 54°C. Circling NA to Rwy's 3 and 21. Inop table does not apply to LPV. For inop ALS, increase LNAV/VNAV all Cats visibility to 1½ SM, LNAV Cats A and B to 1 SM and LNAV Cats C and D visibility to 1¾ SM. When local altimeter setting not received, use Olivia altimeter setting: increase LPV DA to 1379 feet; increase LNAV/VNAV DA to 1584 feet and all visibilities ½ SM; increase all MDAs 60 feet and Circling visibility Cat D ¼ SM. Baro-VNAV and VDP NA when using Olivia Rgnl altimeter setting.

MALSR

MISSED APPROACH:  
Climb to 2800 direct HEPIV and hold.

|                           |  |                                 |
|---------------------------|--|---------------------------------|
| AWOS-3PT<br><b>118.75</b> | MINNEAPOLIS CENTER<br><b>125.5 323.1</b> | UNICOM<br><b>122.8 (CTAF) 0</b> |
|---------------------------|--|---------------------------------|



| CATEGORY     | A      | B           | C                       | D                       |
|--------------|--------|-------------|-------------------------|-------------------------|
| LPV DA       |        | 1324-¾      | 200 (200-¾)             |                         |
| LNAV/VNAV DA |        | 1529-¾      | 405 (500-¾)             |                         |
| LNAV MDA     | 1600-¾ | 476 (500-¾) | 1600-1                  | 476 (500-1)             |
| CIRCLING     | 1600-1 | 474 (500-1) | 1660-1½<br>534 (600-1½) | 1960-2¾<br>834 (900-2¾) |

ELEV 1126 TDZE 1124

HIRL Rwy 13-31 0  
REIL Rwy 31 0

NC-1, 28 NOV 2024 to 26 DEC 2024

NC-1, 28 NOV 2024 to 26 DEC 2024