

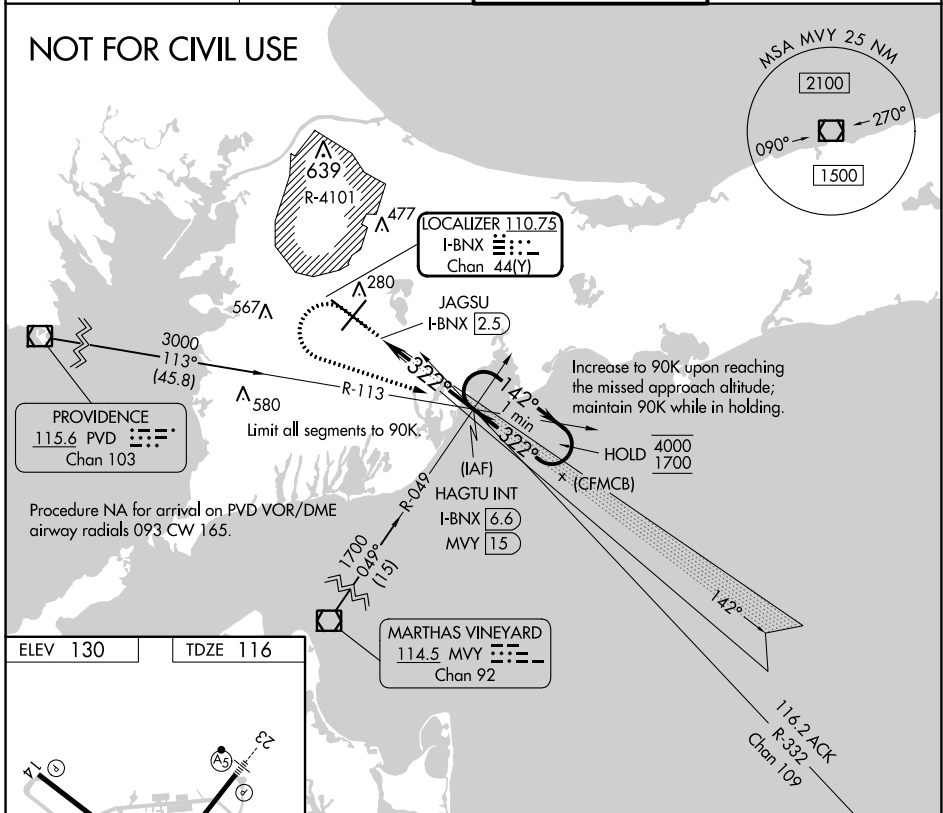
LOC/DME I-BNX 110.75 Chan 44(Y)	APP CRS 322°	Rwy Idg TDZE Apt Elev	9501 116 130
---	------------------------	-----------------------------	---

COPTER ILS Y or LOC Y RWY 32

CAPE COD COAST GUARD AIR STATION (F'MH)

<p>NA U.S. Coast Guard use only. For inop ALS, increase visibility to RVR 2400.</p>	MALSR 	MISSED APPROACH: Climb to 1400 then climbing left turn to 2000 on heading 123° and I-BNX localizer SE course to HAGTU INT/I-BNX 6.6 DME and hold.	
	ATIS 120.475 236.825	BOSTON APP CON 118.2 284.6	COAST GUARD TOWER 128.425 291.1

NOT FOR CIVIL USE



ELEV 130	TDZE 116
<p>REIL Rws 5 and 14 HIRL Rws 5-23 and 14-32</p>	
<p>FAF to MAP 4.2 NM</p>	
Knots	45 60 75 90 105
Min:Sec	5:36 4:12 3:22 2:48 2:24

1400	2000	I-BNX SE crs	HAGTU INT	HAGTU INT I-BNX (6.6) M.V.Y. (15)	One Minute Holding Pattern
↑	hdg 123°				
Use I-BNX DME when on the localizer course.					
		<p>HAGTU INT I-BNX (6.6) M.V.Y. (15)</p> <p>1700</p> <p>142° → 4000</p> <p>← 322° 1700</p> <p>322°</p> <p>GS 3.00° TCH 50</p>			
<p>0.7 NM</p> <p>4.2 NM</p>		<p>JAGSU I-BNX (2.5)</p>			
CATEGORY		COPTER			
H-ILS 32		216/12 100 (100-¼)			
H-LOC 32		520/12 404 (400-¼)			

NE-1, 28 NOV 2024 to 26 DEC 2024

NE-1, 28 NOV 2024 to 26 DEC 2024