

LOC/DME I-BNX <b>110.75</b> Chan 44(Y)	APP CRS <b>322°</b>	Rwy Idg TDZE Apt Elev	<b>9501</b> <b>116</b> <b>130</b>
--	------------------------	-----------------------------	---

# ILS Z or LOC Z RWY 32

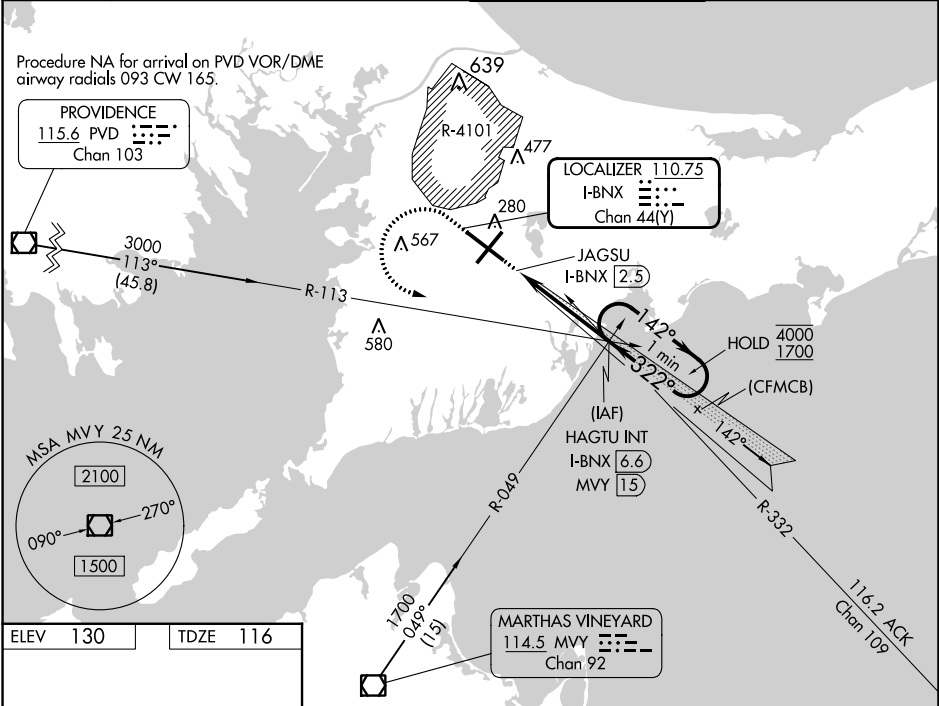
CAPE COD COAST GUARD AIR STATION (F'MH)

**⚠** Circling NA northeast of Rwy 14 and northwest of Rwy 23.  
For inop ALS, increase S-LOC 32 Cats C/D visibility to RVR 6000.  
\*RVR 1800 authorized with use of FD or AP or HUD to DA.

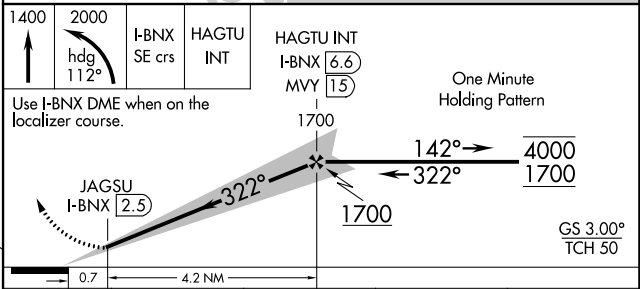
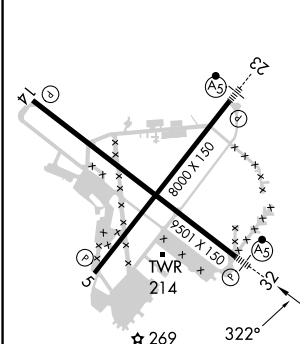


**MISSED APPROACH:** Climb to 1400 then climbing left turn to 2000 on heading 112° and I-BNX localizer SE course to HAGTU INT/I-BNX 6.6 DME and hold.

ATIS <b>120.475 236.825</b>	BOSTON APP CON <b>118.2 284.6</b>	COAST GUARD TOWER <b>128.425 291.1</b>	GND CON <b>124.15 275.8</b>
--------------------------------	--------------------------------------	---	--------------------------------



ELEV 130	TDZE 116
----------	----------



CATEGORY	A	B	C	D
S-ILS 32 *	316/24 200 (200-½)			
S-LOC 32	520/24	404 (400-½)	520/40	404 (400-¾)
<b>☑</b> CIRCLING	580-1 450 (500-1)	640-1 510 (600-1)	900-2¼ 770 (800-2¼)	900-2½ 770 (800-2½)