

WAAS CH 97526 W09A	APP CRS 098°	Rwy Idg TDZE Apt Elev	3402 659 660
--	------------------------	-----------------------------	---

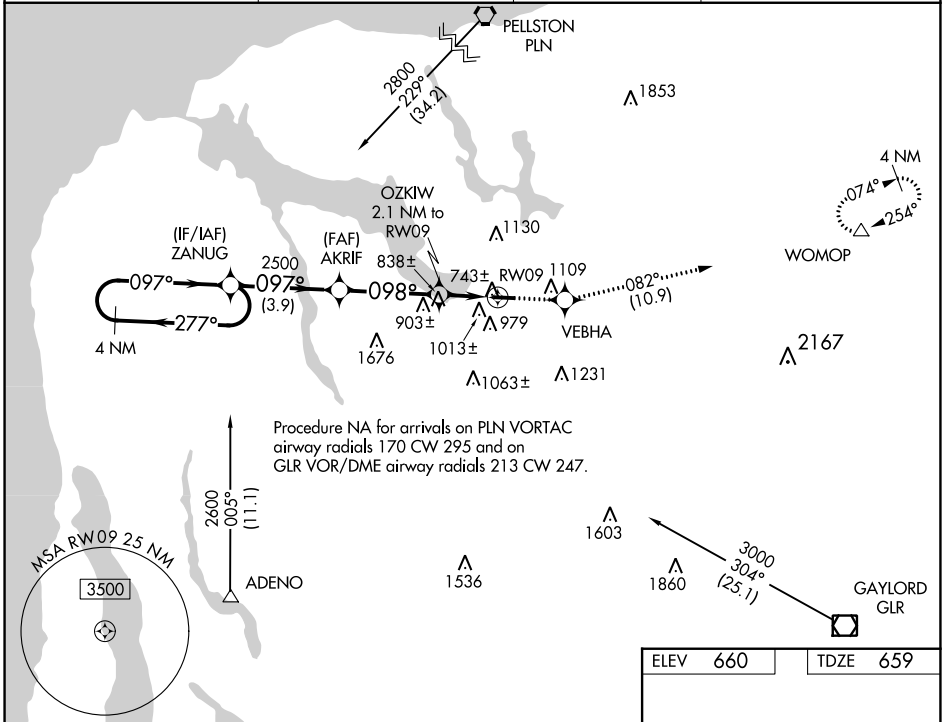
RNAV (GPS) RWY 9

BOYNE CITY MUNI (N98)

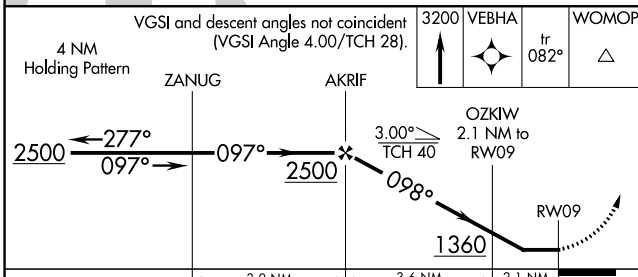
▼ Use Charlevoix altimeter setting; when not received, use Harbor Springs altimeter setting.
▲ NA Procedure NA at night. DME/DME RNP-0.3 NA. Helicopter visibility reduction below 1 SM NA.

MISSED APPROACH: Climb to 3200 direct VEBHA and on track 082° to WOMOP and hold.

CXV AWOS-3P 120.0	MINNEAPOLIS CENTER 134.6 354.05	UNICOM 122.8 (CTAF)	122.9 0
-----------------------------	---	-------------------------------	-----------------------

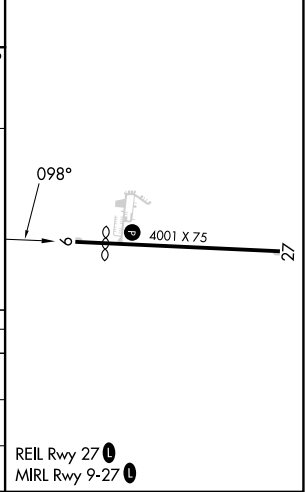


EC-1, 28 NOV 2024 to 26 DEC 2024



ELEV	660	TDZE	659
------	-----	------	-----

CATEGORY	A	B	C	D
LP MDA	1060-1	401 (400-1)		NA
INAV MDA	1260-1	601 (600-1)		NA
CIRCLING	1480-1¼ 820 (900-1¼)	1500-1¼ 840 (900-1¼)		NA



REIL Rwy 27 **0**
MIRL Rwy 9-27 **0**