

WAAS CH 66031 W09A	APP CRS 095°	Rwy Idg TDZE Apt Elev	4403 2033 2037
--	------------------------	-----------------------------	---

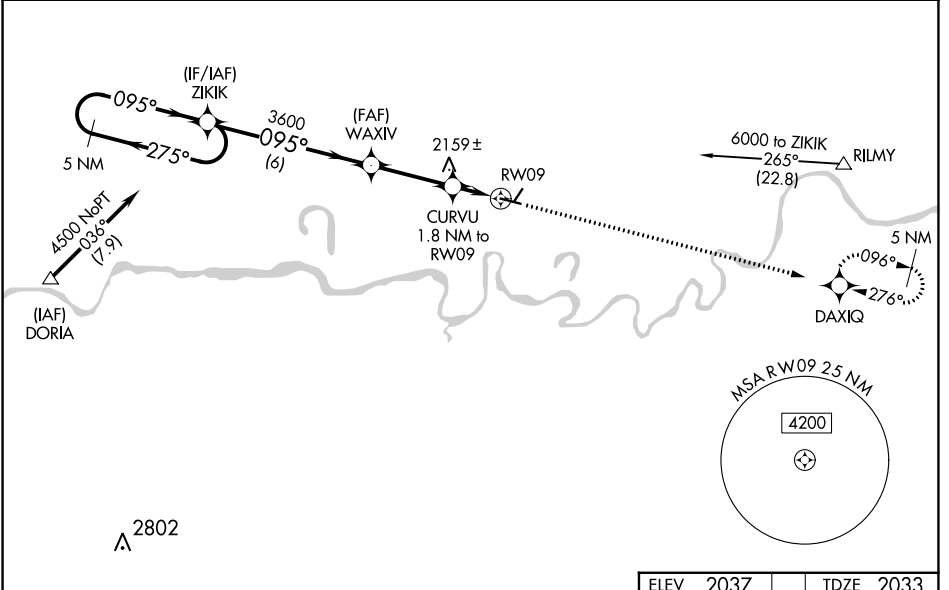
RNAV (GPS) RWY 9

POPLAR MUNI (PO1)

NA For uncompensated Baro-VNAV systems, LNAV/VNAV NA below -19°C (-2°F) or above 54°C (130°F). DME/DME RNP- 0.3 NA. Baro-VNAV and VDP NA with Wolf Point altimeter setting. When local altimeter not received, use Wolf Point altimeter setting: increase LPV DA to 2279, LNAV/VNAV DA to 2329; increase all MDAs 60 feet and LNAV Cat C/D visibility ¼ SM and Circling Cat C/D visibility ¼ SM. Helicopter visibility reduction below 1 SM not authorized. Circling NA to Rwy 2/20.

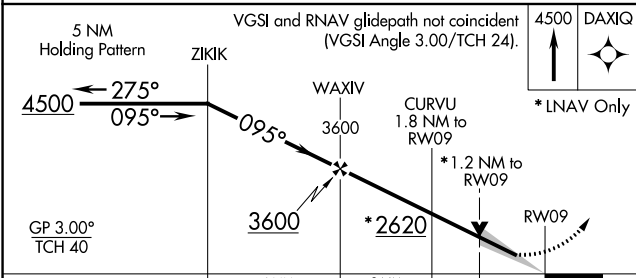
MISSED APPROACH: Climb to 4500 direct DAXIQ and hold.

AWOS-3PT 135.325	SALT LAKE CITY CENTER 126.85 305.2	UNICOM 122.8 (CTAF) 0
----------------------------	--	---------------------------------



NW-1, 28 NOV 2024 to 26 DEC 2024

NW-1, 28 NOV 2024 to 26 DEC 2024



ELEV 2037	TDZE 2033
-----------	-----------

CATEGORY	A	B	C	D
LPV DA		2233-1	200 (200-1)	
LNAV/VNAV DA		2283-1	250 (300-1)	
LNAV MDA	2420-1	387 (400-1)	2420-1 ¹ / ₈	387 (400-1 ¹ / ₈)
CIRCLING	2560-1 523 (600-1)	2600-1 563 (600-1)	2600-1 ¹ / ₂ 563 (600-1 ¹ / ₂)	2740-2 ¹ / ₄ 703 (800-2 ¹ / ₄)

