

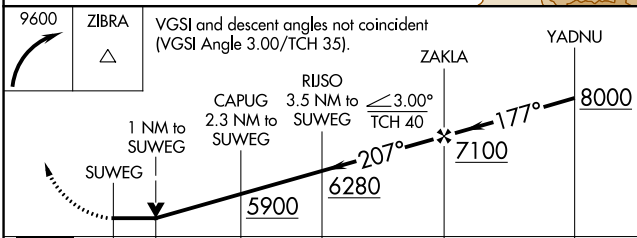
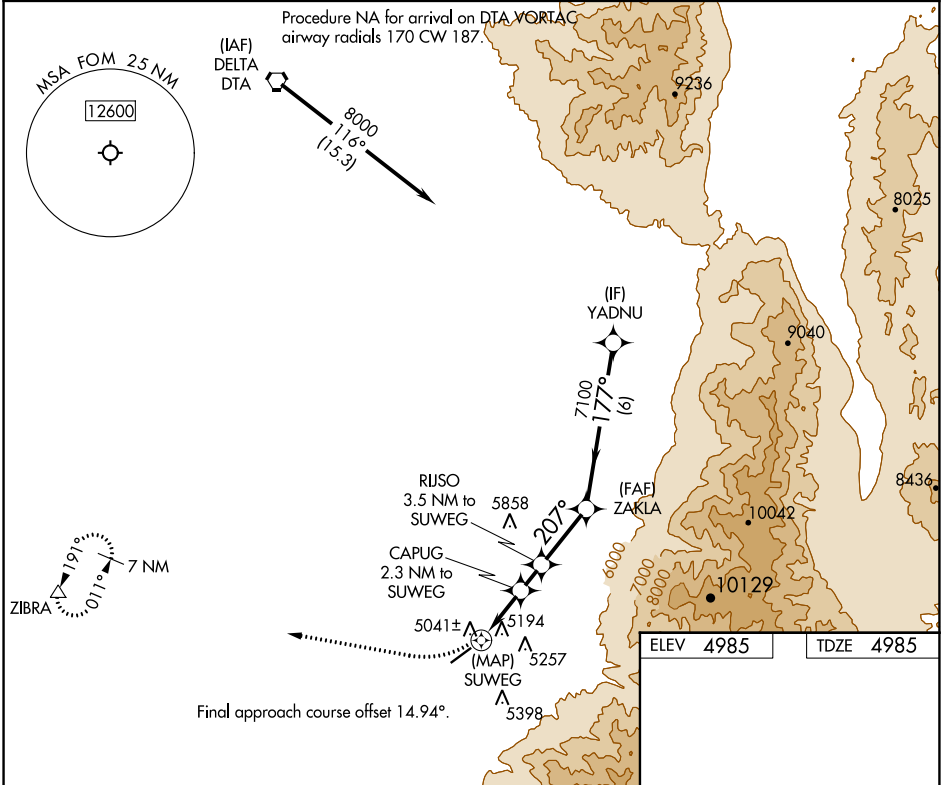
APP CRS	Rwy Idg	5040
207°	TDZE	4985
	Apt Elev	4985

RNAV (GPS) RWY 22

FILLMORE MUNI (FOM)

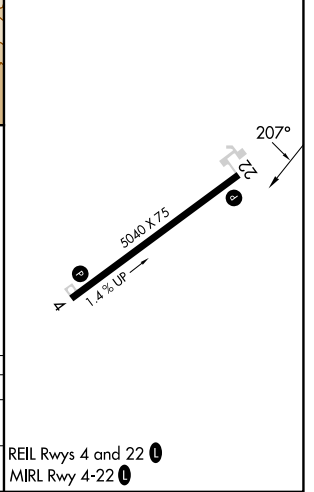
RNP APCH.	MISSED APPROACH: Climbing right turn to 9600 direct ZIBRA and hold, continue climb-in-hold to 9600.
	Rwy 22 helicopter visibility reduction below 3/4 SM NA.

AWOS-3 133.775	SALT LAKE CITY CENTER 125.575 379.275	UNICOM 122.8 (CTAF) 0
--------------------------	---	---------------------------------



ELEV 4985	TDZE 4985
-----------	-----------

	0.5	1	1.3 NM	1.2 NM	2.6 NM	6 NM
CATEGORY	A		B		C	D
RNAV MDA	5500-1 515 (600-1)		5500-1 515 (600-1 3/8)		NA	NA
CIRCLING	5620-1 635 (700-1)		6200-3 1215 (1300-3)		NA	NA



SW-4, 28 NOV 2024 to 26 DEC 2024

SW-4, 28 NOV 2024 to 26 DEC 2024