

WAAS CH 72726 W03A	APP CRS 034°	Rwy Idg TDZE Apt Elev	5002 1308 1348
--	------------------------	-----------------------------	---

RNAV (GPS) RWY 3

BRANSON WEST MUNI/EMERSON FLD (F'WB)

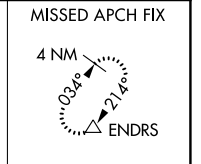
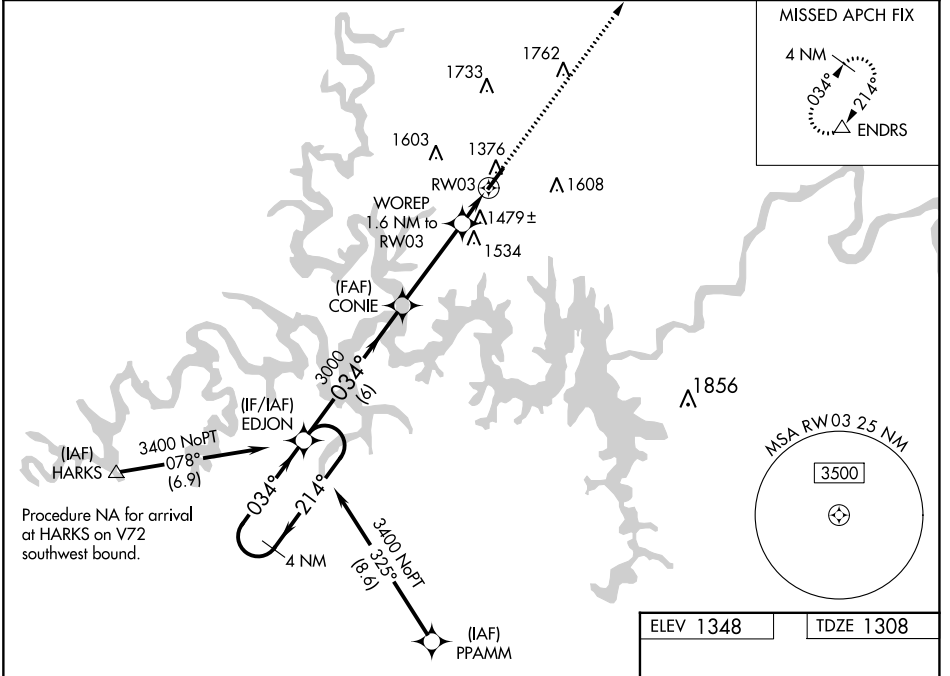
NA DME/DME RNP-0.3 NA. When local altimeter setting not received, use Branson altimeter setting; increase all DA 39 feet and all MDA 40 feet; increase LNAV/VNAV Cat A/B visibility to 1½ mile. For uncompensated Baro-VNAV systems, LNAV/VNAV NA below -17°C (2°F) or above 54°C (130°F). Baro-VNAV NA when using Branson altimeter setting.

MISSED APPROACH: Climb to 3000 direct ENDRS and hold.

AWOS-3PT
119.725

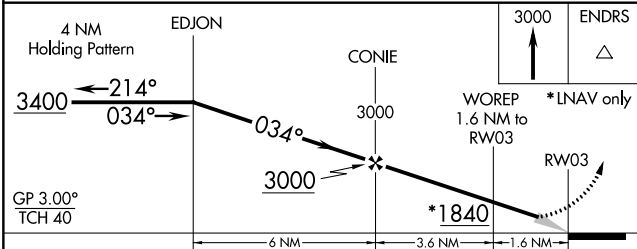
SPRINGFIELD APP CON
126.35

UNICOM
123.0 (CTAF)

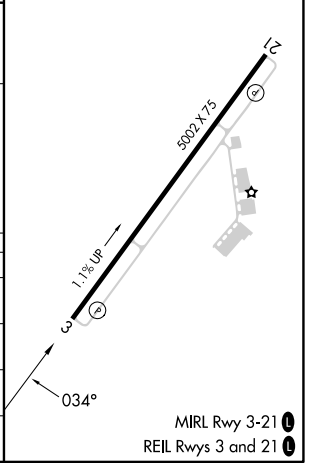


Procedure NA for arrival at HARKS on V72 southwest bound.

ELEV 1348 TDZE 1308



CATEGORY	A	B	C	D
LPV DA	1508-1	200 (200-1)		NA
LNAV/VNAV DA	1813-1¾	505 (500-1¾)		NA
LNAV MDA	1740-1	432 (400-1)		NA
CIRCLING	1900-1	552 (600-1)		NA



MIRL Rwy 3-21
REIL Rwy 3 and 21

NC-3, 28 NOV 2024 to 26 DEC 2024

NC-3, 28 NOV 2024 to 26 DEC 2024