

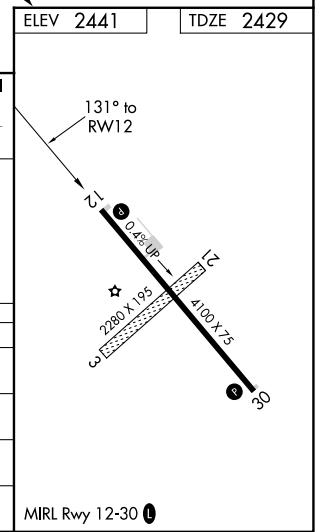
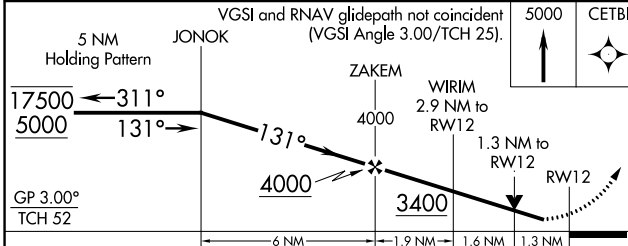
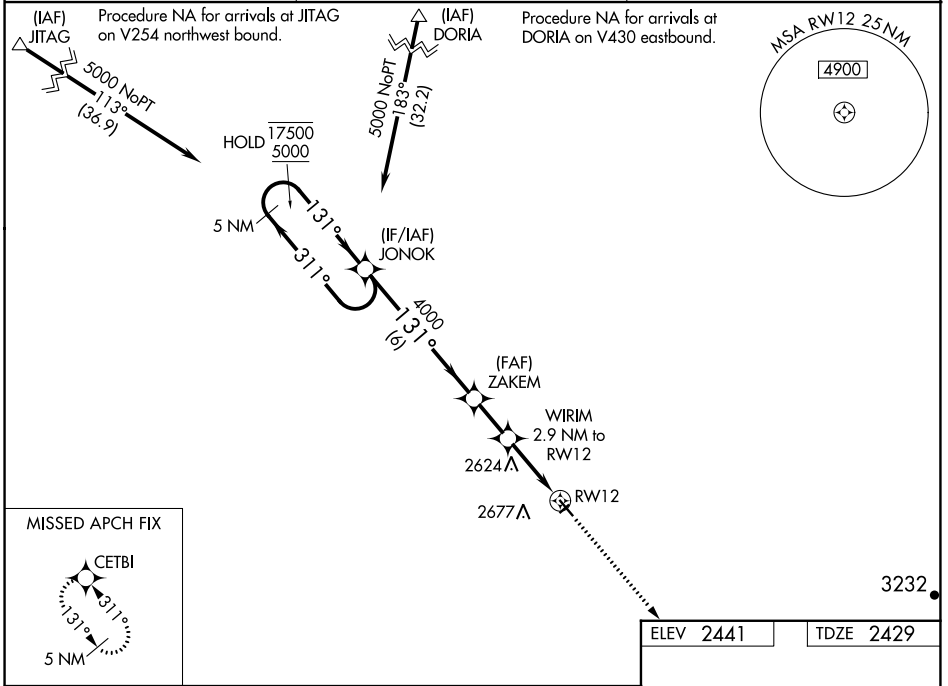
WAAS CH 86930 W12A	APP CRS 131°	Rwy Idg TDZE Apt Elev	4100 2429 2441
--	------------------------	-----------------------------	---

RNAV (GPS) RWY 12

CIRCLE TOWN COUNTY (4U6)

RNP APCH-GPS.	<p>⚠ Rwy 12 helicopter visibility reduction below 3/4 SM NA. For uncompensated Baro-VNAV systems, LNAV/VNAV NA below -19°C or above 54°C. Circling NA to Rwy 3 and 21.</p>	MISSED APPROACH: Climb to 5000 direct CETBI and hold.
---------------	---	---

AWOS-2 119.025	SALT LAKE CENTER 126.85 305.2	UNICOM 122.8 (CTAF) 0
--------------------------	---	---------------------------------



CATEGORY	A	B	C	D
LPV DA	2679-1		250 (300-1)	
LNAV/VNAV DA	2850-1¼		421 (500-1¼)	
LNAV MDA	2880-1 451 (500-1)		2880-1¾ 451 (500-1¾)	
C CIRCLING	2940-1 499 (500-1)	3020-1 579 (600-1)	3060-1¾ 619 (700-1¾)	3320-2¾ 879 (900-2¾)

NW-1, 28 NOV 2024 to 26 DEC 2024

NW-1, 28 NOV 2024 to 26 DEC 2024