

WAAS CH <b>65736</b> <b>W35A</b>	APP CRS <b>355°</b>	Rwy Idg TDZE <b>1733</b> Apt Elev <b>1733</b>
--	------------------------	---

# RNAV (GPS) RWY 35

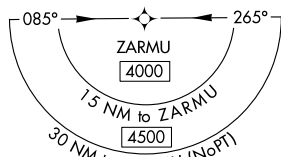
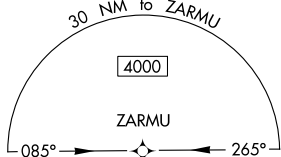
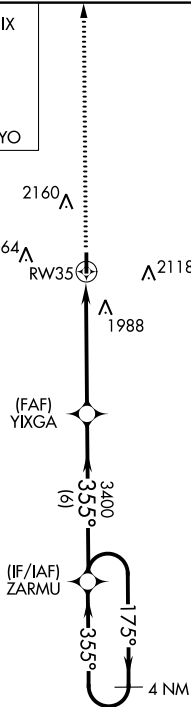
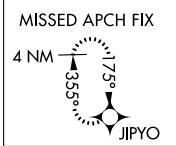
THOMAS MUNI (104)

**Baro-VNAV NA.** Use Weatherford altimeter setting; when not received, use Clinton Rgnl altimeter setting. DME/DME RNP-0.3 NA. Night landing: Rwy 17 operational VGSI required, remain on or above VGSI glidepath until threshold. Helicopter visibility reduction below 1 SM NA.

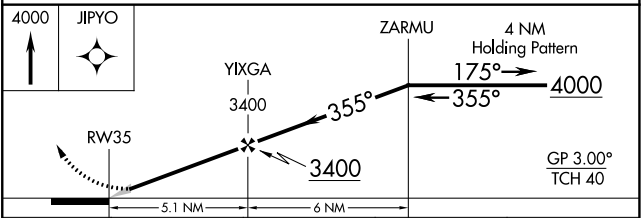
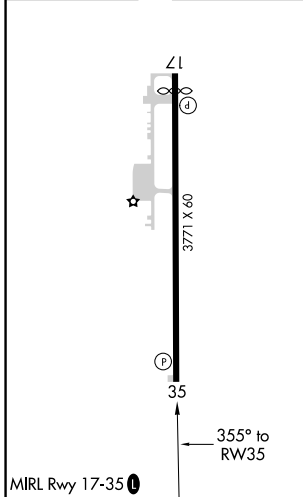
**MISSED APPROACH:** Climb to 4000 direct JIPYO and hold.

OJA AWOS-3 <b>118.575</b>	FORT WORTH CENTER <b>128.4 269.37</b>	CTAF <b>122.9</b>
------------------------------	--	----------------------

**A**  
2479



ELEV 1733	TDZE 1733
-----------	-----------



CATEGORY	A	B	C	D
LPV DA	2035-1	302 (400-1)		NA
LNAV/VNAV DA	2035-1	302 (400-1)		NA
LNAV MDA	2220-1	487 (500-1)		NA
<b>C</b> CIRCLING	2280-1 547 (600-1)	2460-1 727 (800-1)		NA

SC-1, 28 NOV 2024 to 26 DEC 2024

SC-1, 28 NOV 2024 to 26 DEC 2024