

WAAS CH 86839 W35A	APP CRS 350°	Rwy Idg TDZE Apt Elev 4500 2082 2086
----------------------------------------	------------------------	--------------------------------------------------------------------------

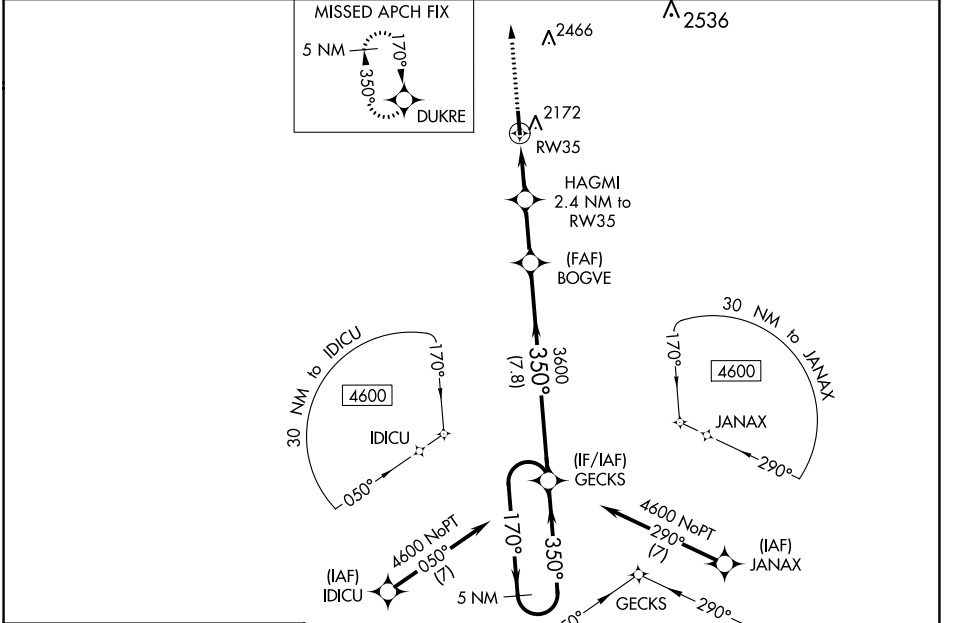
RNAV (GPS) RWY 35

COMANCHE COUNTY (3K8)

⚠ Baro-VNAV NA when using Pratt altimeter setting. DME/DME RNP-0.3 NA. Rwy 35 Helicopter visibility reduction below 3/4 SM NA. When local altimeter setting not received, use Pratt altimeter setting and increase LPV DA to 2554 and LNAV/VNAV DA to 2572 and all MDA 120 feet; increase LPV all Cats visibility 1/8 SM, LNAV/VNAV all Cats visibility 1/8 SM, LNAV Cat C visibility 1/4 SM, and increase Circling Cat C visibility 1/2 SM.

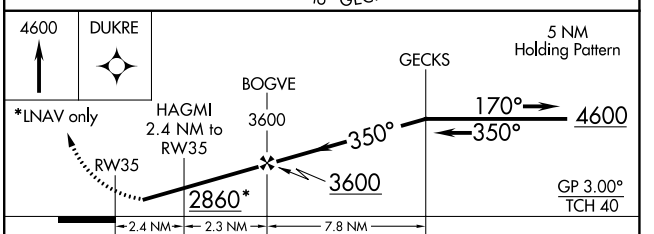
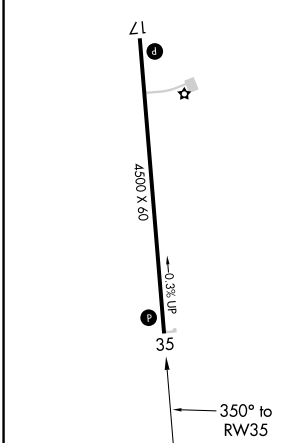
⚠ MISSED APPROACH: Climb to 4600 direct DUKRE and hold.

AWOS-3PT 118.05	KANSAS CITY CENTER 126.95 379.2	CTAF 122.9
---------------------------	-------------------------------------------	----------------------



ELEV 2086	TDZE 2082
------------------	------------------

REIL Rws 17 and 35
MIRL Rwy 17-35



CATEGORY	A	B	C	D
LPV DA	2443-1 1/4	361 (400-1 1/4)		NA
LNAV/VNAV DA	2461-1 1/4	379 (400-1 1/4)		NA
LNAV MDA	2540-1	458 (500-1)	2540-1 3/8 458 (500-1 3/8)	NA
C CIRCLING	2620-1	534 (600-1)	2940-2 1/2 854 (900-2 1/2)	NA

NC-2, 28 NOV 2024 to 26 DEC 2024

NC-2, 28 NOV 2024 to 26 DEC 2024