

RNAV (GPS)-A

APCH CRS	Rwy Idg	N/A
211°	TDZE	N/A
	Arpt Elev	933

[USAF]

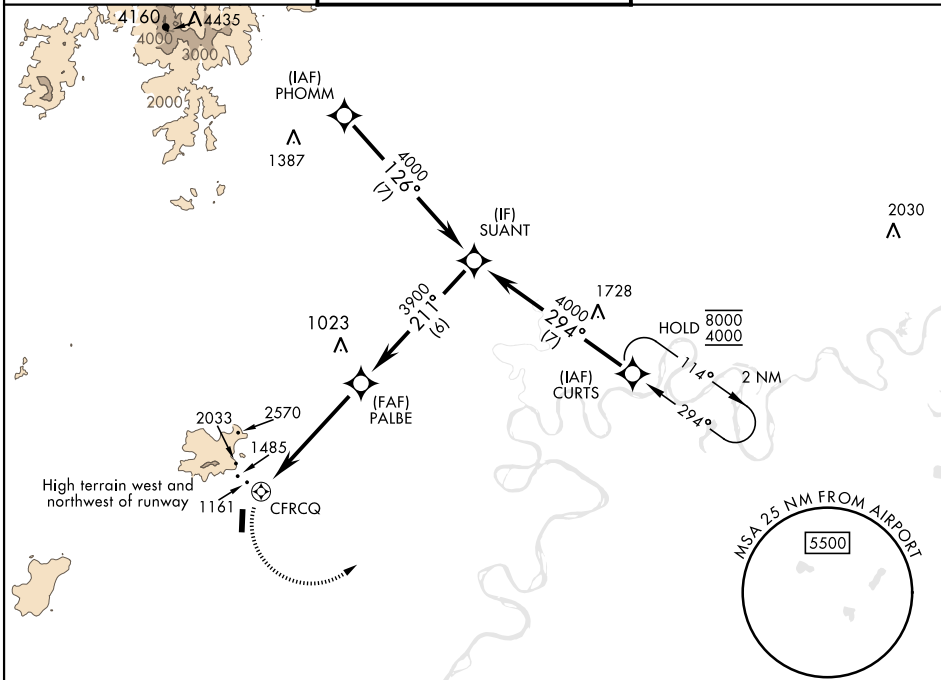
TATALINA LRSS (PATL)

RNP APCH - GPS

▼ * Circling NA to Rwy 17. Circling to Rwy 35 NA W of Rwy 17-35. Night Operations not authorized.

MISSED APPROACH: Climbing left turn to 4000 direct CURTS and hold.

KENAI RADIO 122.3	UNICOM 126.2 (CTAF) 364.2	AWOS-3
-----------------------------	-------------------------------------	--------



AK, 31 OCT 2024 to 26 DEC 2024

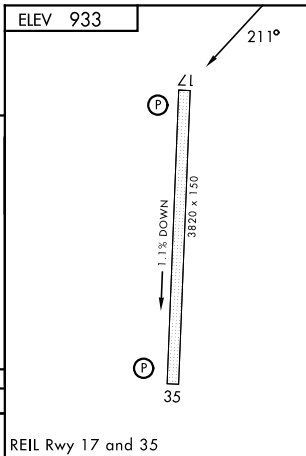
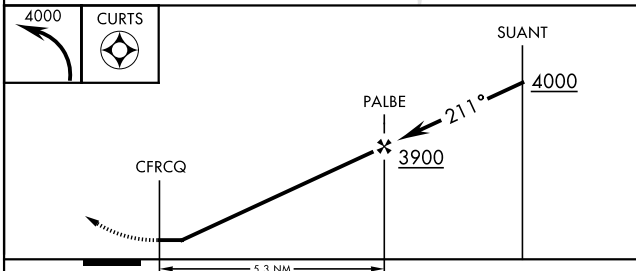
AK, 31 OCT 2024 to 26 DEC 2024

Uncontrolled Airspace below 1200' AGL within 4 NM of Tatalina airport

NOT FOR CIVIL USE

MILITARY CERTIFIED AIRCREWS OR AUTHORIZED CONTRACT AIRCRAFT ONLY

EMERG SAFE ALT 100 NM 12,000



CATEGORY	A	B	C	D
CIRCLING*	1900-1¼ 967 (1000-1¼)	2440-1½ 1507 (1600-1½)	2920-3 1987 (2000-3)	NA

REIL Rwy 17 and 35

RNAV (GPS)-A