

WAAS CH 56637 W25A	APP CRS 248°	Rwy Idg TDZE 966 Apt Elev 966	3900
--	------------------------	---	-------------

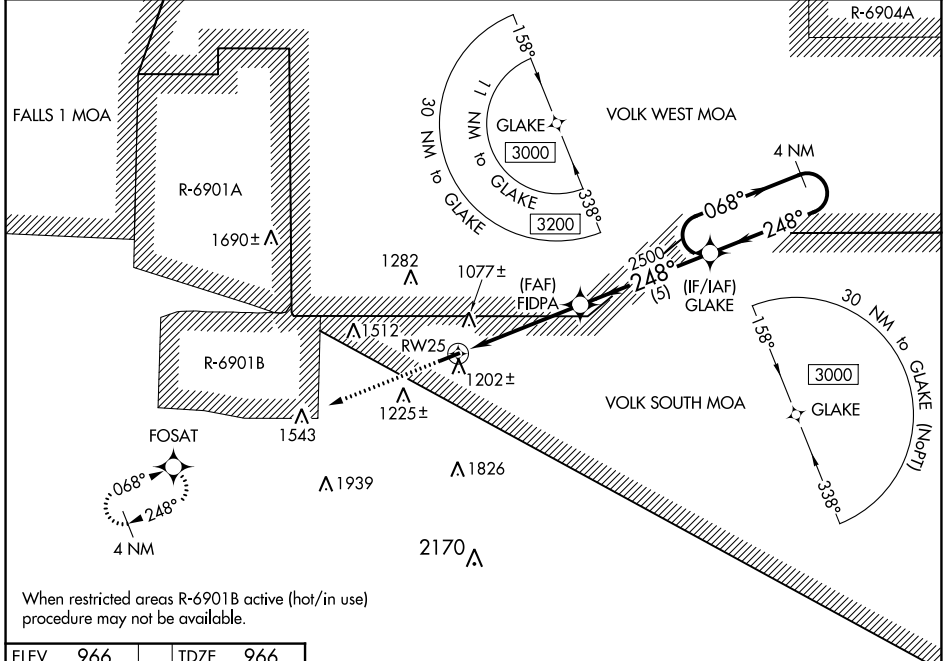
RNAV (GPS) RWY 25

BLOYER FLD (Y72)

NA DME/DME RNP-0.3 NA. Use Camp Douglas altimeter setting; when not received, use Sparta/Fort McCoy altimeter setting and increase all MDA 20 feet. Helicopter visibility reduction below 1 SM NA. Procedure NA at night.

MISSED APPROACH: Climb to 3000 direct FOSAT and hold.

VOLK APP CON ★ 135.25 244.875	VOLK CTAF 127.5	CTAF 122.9
---	---------------------------	----------------------

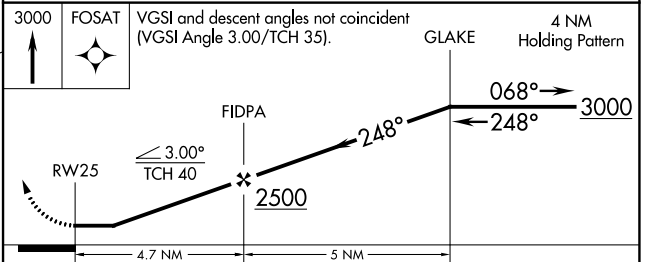
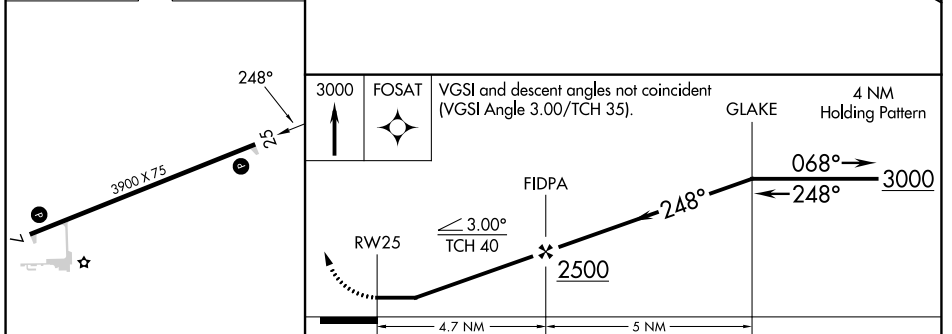


EC-3, 28 NOV 2024 to 26 DEC 2024

EC-3, 28 NOV 2024 to 26 DEC 2024

When restricted areas R-6901B active (hot/in use) procedure may not be available.

ELEV 966	TDZE 966
----------	----------



CATEGORY	A	B	C	D
LP MDA	1440-1	474 (500-1)	1440-1 ³ / ₈ 474 (500-1 ³ / ₈)	NA
LNAV MDA	1480-1	514 (600-1)	1480-1 ³ / ₈ 514 (600-1 ³ / ₈)	NA
CIRCLING	1540-1 574 (600-1)	1560-1 594 (600-1)	1660-2 694 (700-2)	NA

MIRL Rwy 7-25
REIL Rwy 7 and 25