

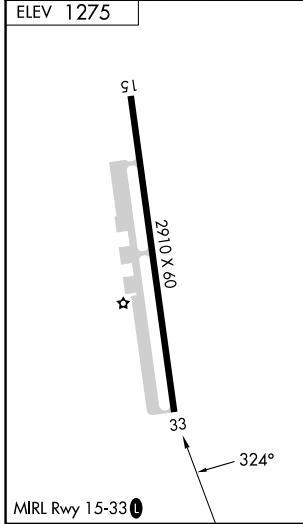
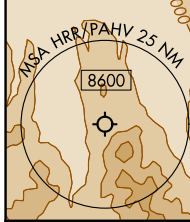
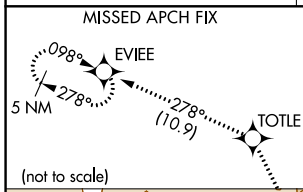
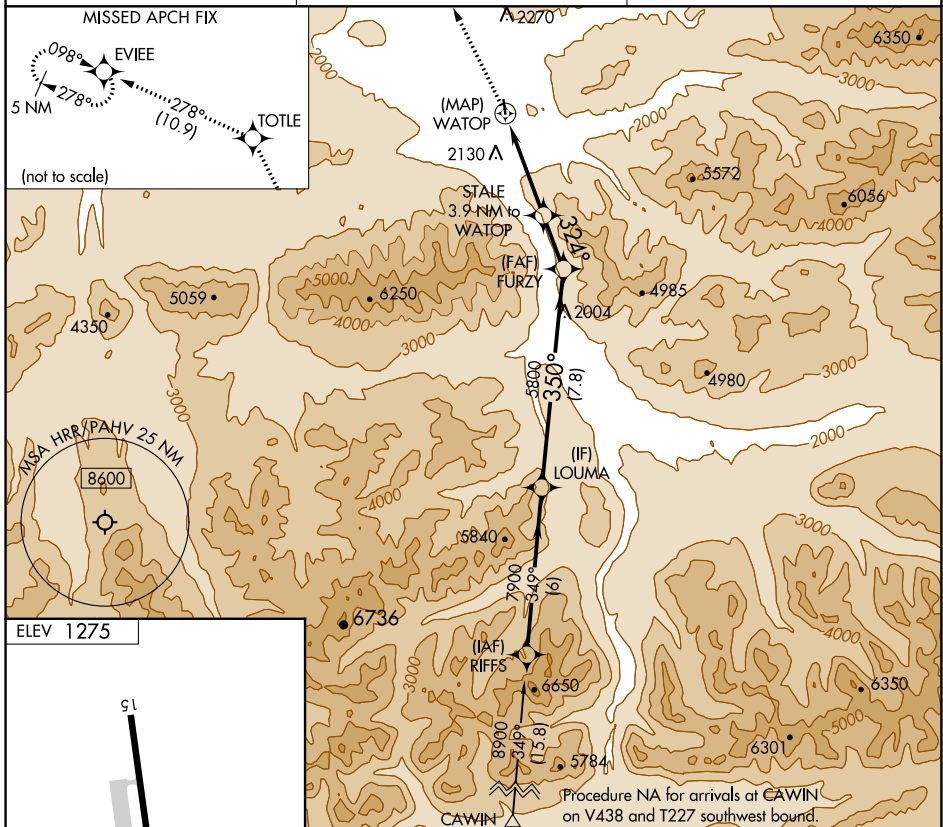
APP CRS <b>324°</b>	Rwy Idg TDZE Apt Elev <b>1275</b>	N/A N/A <b>1275</b>
------------------------	--	---------------------------

# RNAV (GPS)-A

HEALY RIVER (HRR) (PAHV)

RNP APCH - GPS.	Procedure NA at night. Rwy 15 and 33 helicopter visibility reduction below 1 SM NA. Use McKinley Park altimeter setting; when not received, procedure NA.	MISSED APPROACH: Climb to 5800 direct TOTLE and on track 278° to EVIEE and hold.
-----------------	---	--

INR/PAIN AWOS-3P <b>135.75</b>	ANCHORAGE CENTER <b>120.9 319.2</b>	CTAF <b>122.9</b>
-----------------------------------	--	----------------------



5800	TOTLE	tr 278°	EVIEE	LOUMA
↑	✧		✧	
			STALE 3.9 NM to WATOP	FURZY
			324°	350°
			5200	7900
			3.9 NM	2 NM
			7.8 NM	
CATEGORY	A	B	C	D
<b>C</b> CIRCLING	3640-1¼ 2365 (2400-1¼)	3640-1½ 2365 (2400-1½)	3720-3 2445 (2500-3)	NA

AK, 31 OCT 2024 to 26 DEC 2024

AK, 31 OCT 2024 to 26 DEC 2024