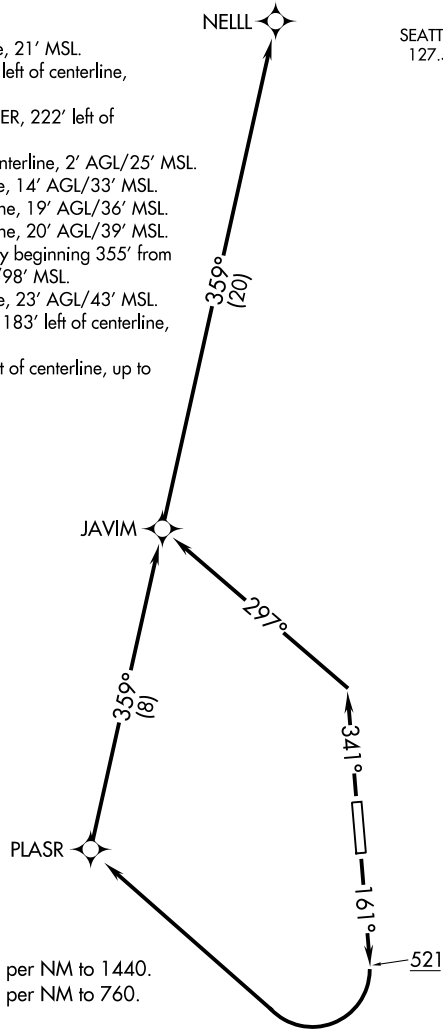


AWOS-3
118.15
SEATTLE CENTER
127.55 254.35
CTAF
122.8

TAKEOFF OBSTACLE NOTES

- Rwy 16: Terrain 1' from DER, 198' left of centerline, 21' MSL.
- Poles, sign beginning 12' from DER, 134' left of centerline, up to 34' AGL/58' MSL.
- Pole, trees, building beginning 25' from DER, 222' left of centerline, up to 36' AGL/67' MSL.
- Vegetation 34' from DER, 486' right of centerline, 2' AGL/25' MSL.
- Tree 86' from DER, 290' right of centerline, 14' AGL/33' MSL.
- Tree 229' from DER, 163' right of centerline, 19' AGL/36' MSL.
- Tree 249' from DER, 260' right of centerline, 20' AGL/39' MSL.
- Trees, terrain, pole, building, general utility beginning 355' from DER, 62' left of centerline, up to 69' AGL/98' MSL.
- Tree 886' from DER, 16' right of centerline, 23' AGL/43' MSL.
- Trees, building beginning 979' from DER, 183' left of centerline, up to 53' AGL/99' MSL.
- Trees beginning 1275' from DER, 185' left of centerline, up to 62' AGL/111' MSL.



NOTE: GPS required.
NOTE: RNAV 1.

TAKEOFF MINIMUMS

- Rwy 16: 600-1¼ with minimum climb of 440' per NM to 1440.
- Rwy 34: 700-1¾ with minimum climb of 320' per NM to 760.

(NOTES CONTINUED ON FOLLOWING PAGE)

NOTE: Chart not to scale.

DEPARTURE ROUTE DESCRIPTION

TAKEOFF RUNWAY 16: Climb on heading 161° to 521, then climbing right turn direct PLASR, then right turn on track 359° to JAVIM, then on track 359° to NELL, thence. . . .

TAKEOFF RUNWAY 34: Climb on heading 341° to intercept course 297° to JAVIM, then climbing right turn on track 359° to NELL, thence. . . .

. . . .on assigned route, expect clearance to filed altitude within 10 minutes after departure.

NW-1, 28 NOV 2024 to 26 DEC 2024

NW-1, 28 NOV 2024 to 26 DEC 2024