

WAAS CH 40143 W14A	APP CRS 140°	Rwy Idg TDZE Apt Elev	7503 2316 2353
--	------------------------	-----------------------------	---

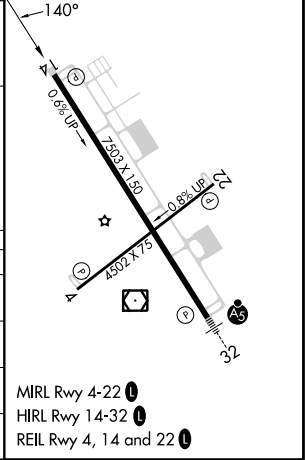
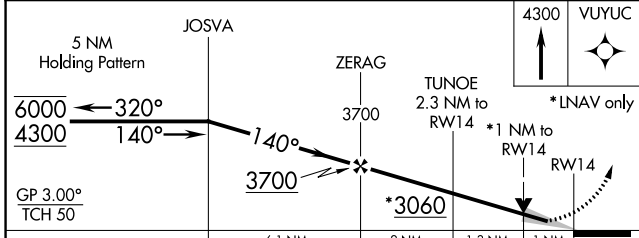
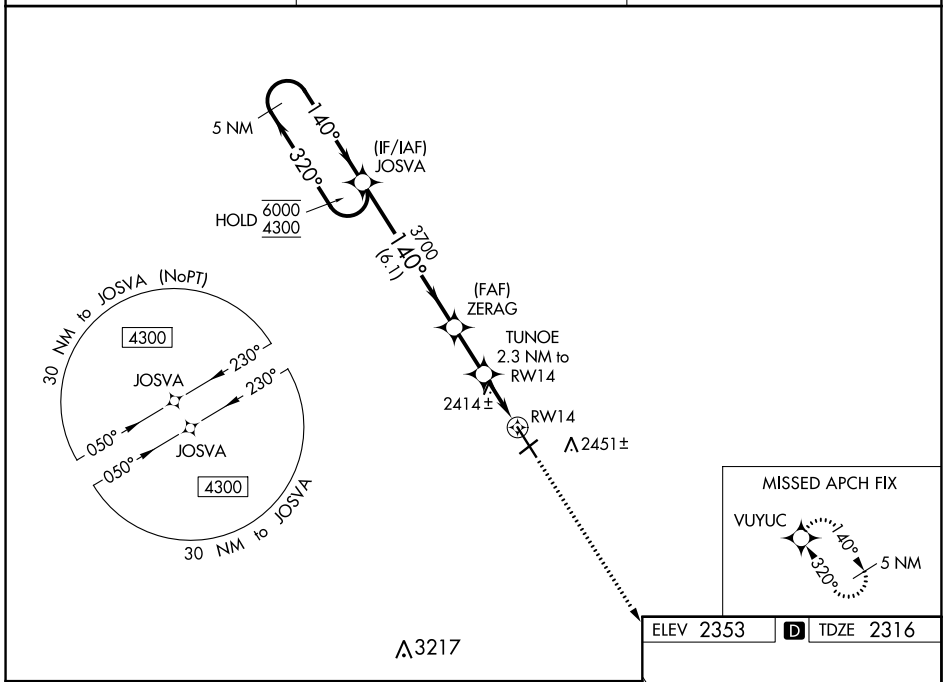
RNAV (GPS) RWY 14

WILLISTON BASIN INTL (XWA)

RNP APCH.
 For uncompensated Baro-VNAV systems, LNAV/VNAV NA below -19°C or above 54°C.

MISSED APPROACH: Climb to 4300 direct VUYUC and hold.

ASOS 125.925	SALT LAKE CITY CENTER 126.85 305.2	UNICOM 122.8 (CTAF)
------------------------	--	-------------------------------



CATEGORY	A	B	C	D
LPV DA		2516-3/4	200 (200-3/4)	
LNAV/VNAV DA		2577-7/8	261 (300-7/8)	
LNAV MDA		2680-1	364 (400-1)	
CIRCLING	2760-1 407 (500-1)	2820-1 467 (500-1)	2820-1 1/2 467 (500-1 1/2)	2920-2 567 (600-2)

NC-1, 28 NOV 2024 to 26 DEC 2024

NC-1, 28 NOV 2024 to 26 DEC 2024