

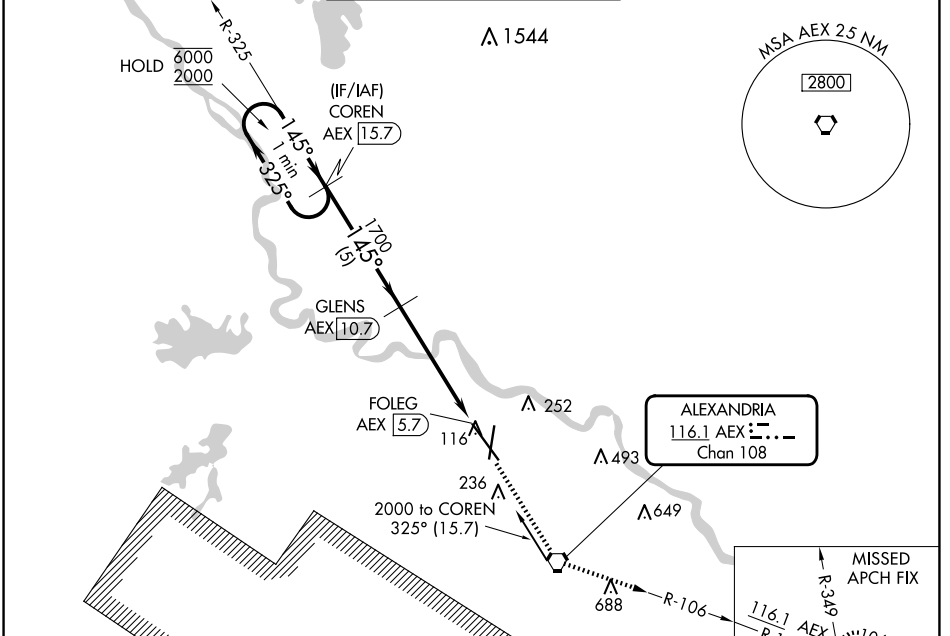
VORTAC AEX 116.1 Chan 108	APP CRS 145°	Rwy Idg TDZE 85 Apt Elev 89	9352
-----------------------------------------------	------------------------	-------------------------------------------------	-------------

VOR RWY 14

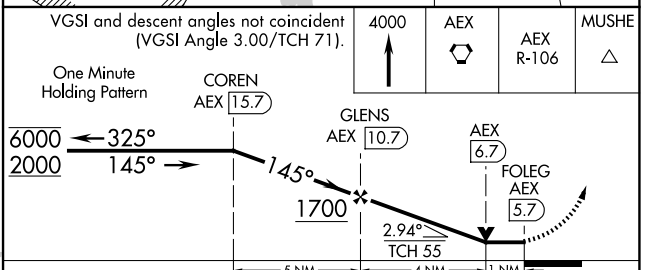
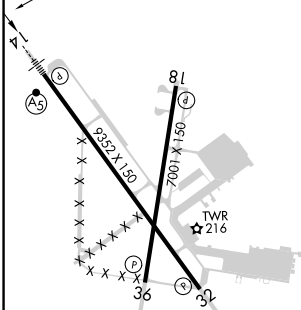
ALEXANDRIA INTL (AEX)

DME required.	MALS/R	MISSED APPROACH: Climb to 4000 direct AEX VORTAC, then on AEX VORTAC R-106 to MUSHE INT and hold.
▼ When R-3801B active, RADAR required.		
▲ Rwy 14 helicopter visibility reduction below ¾ SM NA.		

ASOS 123.975	POLK APP CON 125.4 254.8	ALEXANDRIA TOWER 127.35 (CTAF) 269.2	GND CON 121.9 372.0	CLNC DEL 121.9
------------------------	------------------------------------	------------------------------------------------	-------------------------------	--------------------------



ELEV 89	D	TDZE 85
---------	----------	---------



VGSI and descent angles not coincident (VGSI Angle 3.00/TCH 71).	4000	AEX	AEX R-106	MUSHE
One Minute Holding Pattern	COREN AEX 15.7			
6000 ← 325°		GLENS AEX 10.7	AEX 6.7	FOLEG AEX 5.7
2000 → 145°				
		1700		
			2.94°	
			TCH 55	
CATEGORY	A	B	C	D
S-14	500/40	415 (500-¾)		500/55 415 (500-1)
CIRCLING	540-1 451 (500-1)	560-1 471 (500-1)	700-1¾ 611 (700-1¾)	860-2½ 771 (800-2½)

TDZL Rwy 14
REIL Rws 18, 32 and 36
HIRL Rws 18-36 and 14-32

SC-4, 23 JAN 2025 to 20 FEB 2025

SC-4, 23 JAN 2025 to 20 FEB 2025