

(VRSTY3.VRSTY) 24305

VRSTY THREE DEPARTURE (RNAV)

HARTSFIELD/JACKSON ATLANTA INTL(ATL)

AL-26 (FAA)

ATLANTA, GEORGIA

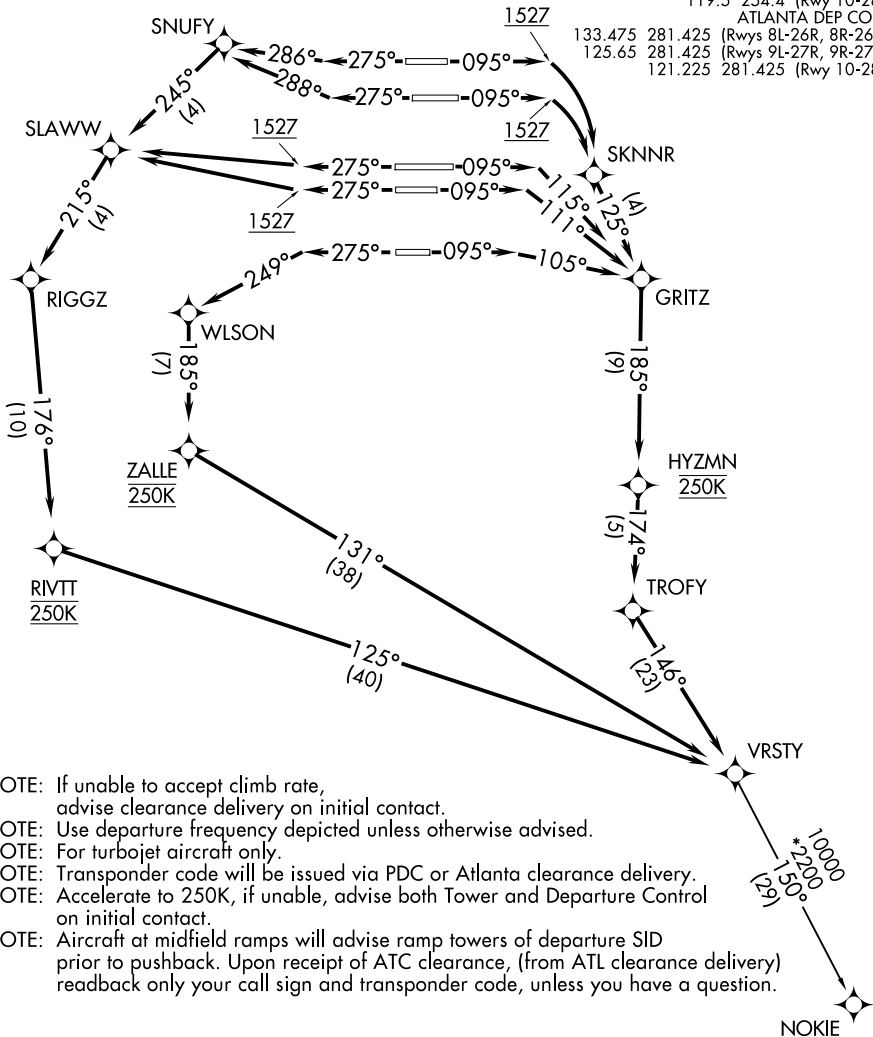
RNAV 1 - DME/DME/IRU or GPS.
RADAR required for non-GPS equipped aircraft.

TOP ALTITUDE:
10000

D-ATIS 125.55
 CLNC DEL 118.1
 CPDLC
 GND CON
 121.9 254.4 (Rwys 8L-26R, 8R-26L)
 121.75 254.4 (Rwys 9L-27R, 9R-27L)
 121.65 254.4 (Rwy 10-28)
 ATLANTA TOWER
 119.1 254.4 (Rwy 8L-26R)
 125.325 254.4 (Rwy 8R-26L)
 119.3 254.4 (Rwy 9R-27L)
 123.85 254.4 (Rwy 9L-27R)
 119.5 254.4 (Rwy 10-28)
 ATLANTA DEP CON
 133.475 281.425 (Rwys 8L-26R, 8R-26L)
 125.65 281.425 (Rwys 9L-27R, 9R-27L)
 121.225 281.425 (Rwy 10-28)

TAKEOFF MINIMUMS

Rwys 8L/R, 9L/R, 10, 26L/R, 27L/R, 28: Standard with minimum climb of 500' per NM to 1527.



- NOTE: If unable to accept climb rate, advise clearance delivery on initial contact.
- NOTE: Use departure frequency depicted unless otherwise advised.
- NOTE: For turbojet aircraft only.
- NOTE: Transponder code will be issued via PDC or Atlanta clearance delivery.
- NOTE: Accelerate to 250K, if unable, advise both Tower and Departure Control on initial contact.
- NOTE: Aircraft at midfield ramps will advise ramp towers of departure SID prior to pushback. Upon receipt of ATC clearance, (from ATL clearance delivery) readback only your call sign and transponder code, unless you have a question.

NOTE: Chart not to scale.

(CONTINUED ON FOLLOWING PAGE)

VRSTY THREE DEPARTURE (RNAV)

(VRSTY3.VRSTY) 19MAY22

ATLANTA, GEORGIA

HARTSFIELD/JACKSON ATLANTA INTL(ATL)

SE-4, 23 JAN 2025 to 20 FEB 2025

SE-4, 23 JAN 2025 to 20 FEB 2025