

WAAS CH 45632 W24A	APP CRS 240°	Rwy Idg TDZE Apt Elev	4601 2573 2573
--	------------------------	-----------------------------	---

RNAV (GPS) RWY 24

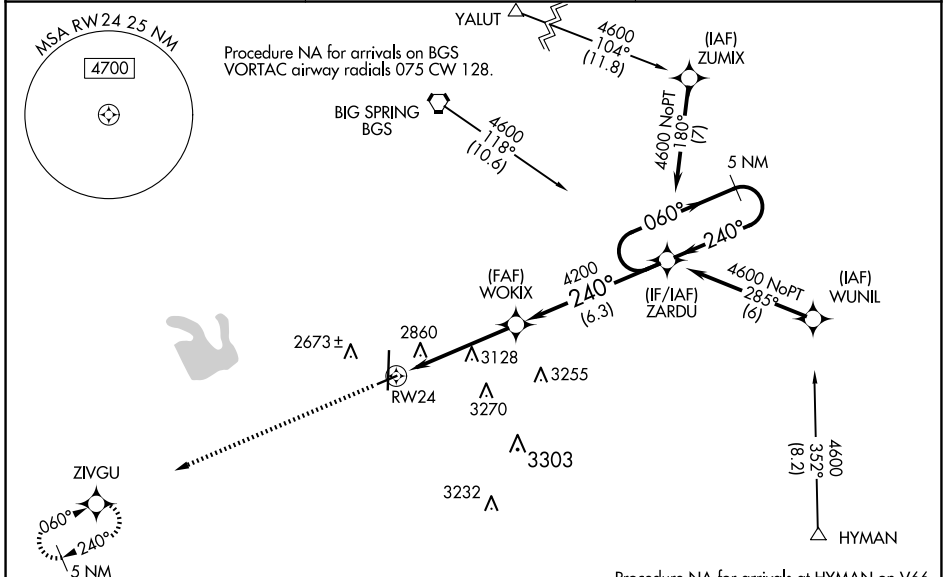
BIG SPRING/MC MAHON-WRINKLE (BPG)

RNP APCH.

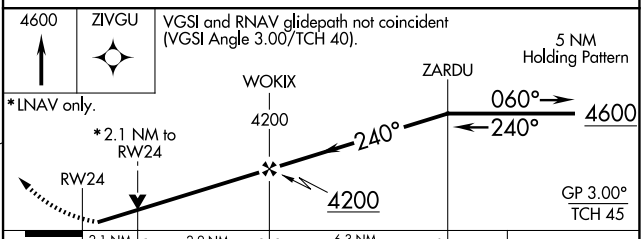
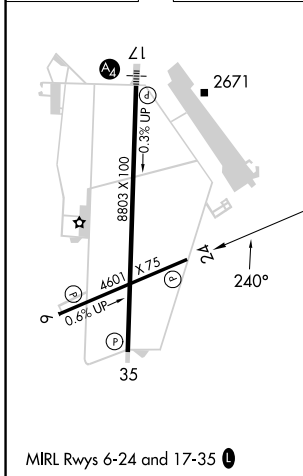
⚠ For uncompensated Baro-VNAV systems, LNAV/VNAV NA below -20°C or above 54°C. When local altimeter setting not received, use Midland Intl Air and Space Port altimeter setting: increase all DA 130 feet and all MDA 140 feet; increase LPV and LNAV/VNAV Cats A/B visibility ½ SM, and LNAV Cat A visibility ¼ SM. Baro-VNAV and VDP NA with Midland Intl Air and Space Port altimeter setting. Rwy 24 helicopter visibility reduction below ¾ SM NA.

MISSED APPROACH: Climb to 4600 direct ZIVGU and hold.

AWOS-3PT 118.025	FORT WORTH CENTER 133.7 350.2	UNICOM 122.8 (CTAF) 📻
----------------------------	---	--



ELEV 2573	TDZE 2573
-----------	-----------



CATEGORY	A	B	C	D
LPV DA	2823-¾	250 (300-¾)		NA
LNAV/VNAV DA	3236-2¼	663 (700-2¼)		NA
LNAV MDA	3380-1 807 (900-1)	3380-1¼ 807 (900-1¼)		NA

SC-2, 23 JAN 2025 to 20 FEB 2025

SC-2, 23 JAN 2025 to 20 FEB 2025