

WAAS CH <b>56419</b> <b>W35A</b>	APP CRS <b>353°</b>	Rwy Idg TDZE Apt Elev	<b>6099</b> <b>1238</b> <b>1258</b>
--	------------------------	-----------------------------	---

# RNAV (GPS) RWY 35

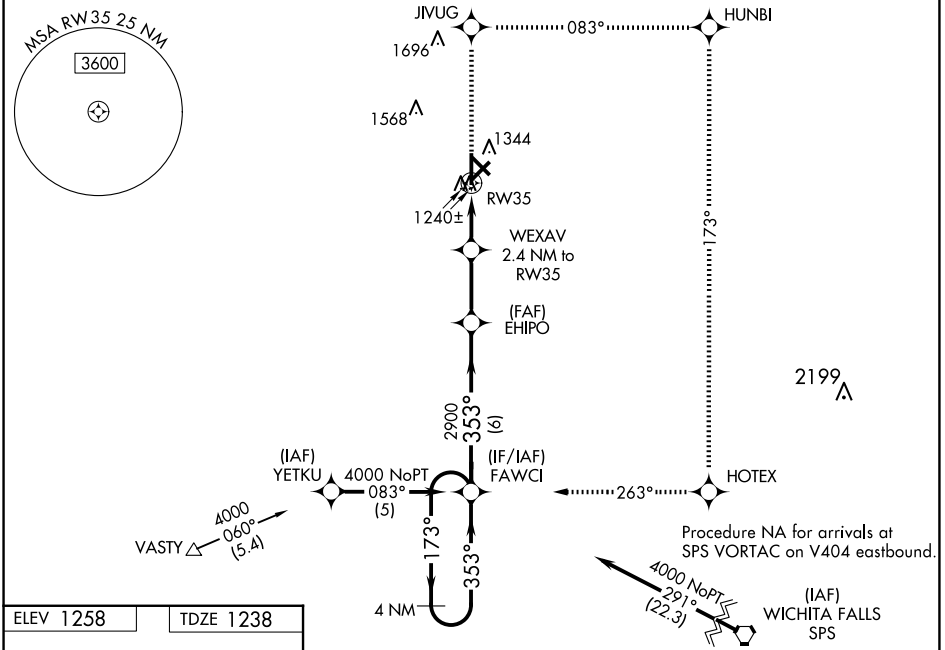
FREDERICK RGNL (F'DR)

RNP APCH-GPS.

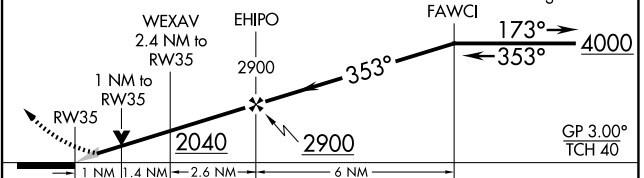
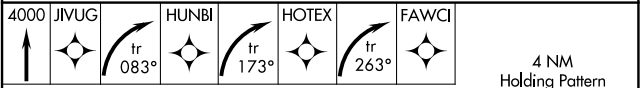
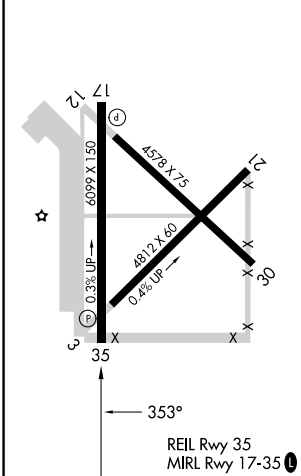
▼ For uncompensated Baro-VNAV systems, LNAV/VNAV NA below -17°C or above 46°C.  
 ▲ Baro-VNAV and VDP NA when using Vernon altimeter setting. When local altimeter setting not received, use Vernon altimeter setting: increase LPV DA to 1478 feet; increase LNAV/VNAV DA to 1540 feet; increase all MDAs 40 feet and visibility LNAV Cat C ¼ SM and Circling Cat D ½ SM. Circling Rwy 3, 12,17, 21, 30, NA at night.

MISSED APPROACH: Climb to 4000 direct JIVUG and right turn on track 083° to HUNBI and right turn on track 173° to HOTEK and right turn on track 263° to FAWCI and hold.

ASOS <b>132.675</b>	ALTUS APP CON ★ <b>125.1 353.7</b>	UNICOM <b>123.05 (CTAF) 0</b>
------------------------	---------------------------------------	----------------------------------



ELEV 1258	TDZE 1238
-----------	-----------



CATEGORY	A	B	C	D
LPV DA	1438-¾		200 (200-¾)	
LNAV/VNAV DA	1500-1		262 (300-1)	
LNAV MDA	1600-1		362 (400-1)	
CIRCLING	1700-1	1720-1	1880-1¾	1900-2
	442 (500-1)	462 (500-1)	622 (700-1¾)	642 (700-2)

SC-1, 23 JAN 2025 to 20 FEB 2025

SC-1, 23 JAN 2025 to 20 FEB 2025