

LOC I-BUR <b>109.5</b>	APP CRS <b>079°</b>	Rwy Idg TDZE Apt Elev <b>5801 727 778</b>
---------------------------	------------------------	--

# ILS Z or LOC Z RWY 8

BOB HOPE (BUR)

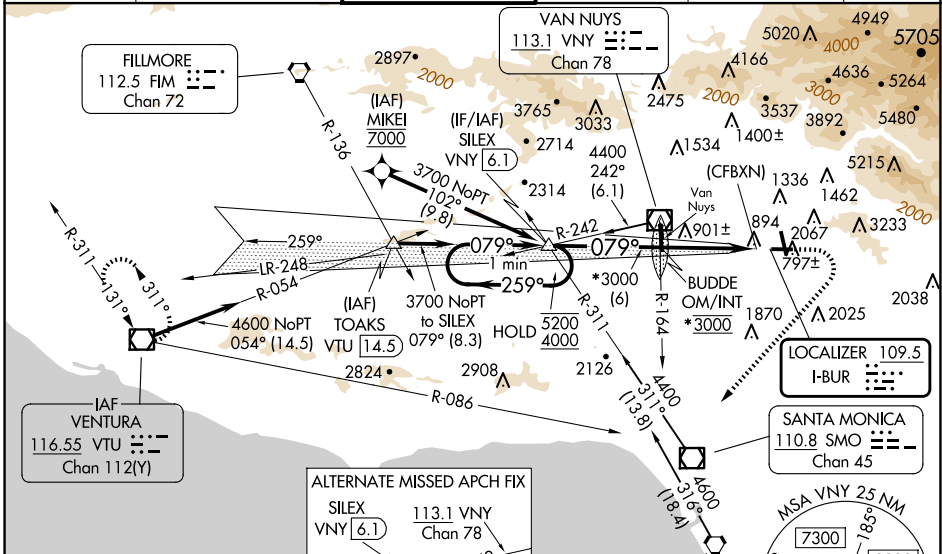
From MIKEI: RNAV 1-GPS required.

Localizer unusable within 0.9 NM to thld. Straight-in Rwy 8 at night, Circling Rwy 33 at night, operational VGSI required, remain on or above VGSI glidepath until threshold. Circling Rwy 26 NA at night and Circling Rwy 33 NA at night for Cat D. Circling NA for Cats A/B/C northeast of Rwy 15 and 26. Circling NA for Cat D east of Rwy 15-33. Inop table does not apply to S-ILS 8. For inop ALS, increase S-LOC 8 Cats A/B visibility to RVR 6000 and S-LOC 8 Cats C/D visibility to 1/4 SM. Rwy 8 helicopter visibility reduction below RVR 5000 NA.

MALSRL

MISSED APPROACH: Climb to 1300 then climbing right turn to 4600 on heading 210° and VTU VOR/DME R-086 to VTU VOR/DME and hold. #Messed approach requires a minimum climb of 340 feet per NM to 2520 (if unable to meet climb gradient, see ILS Y or LOC Y RWY 8).

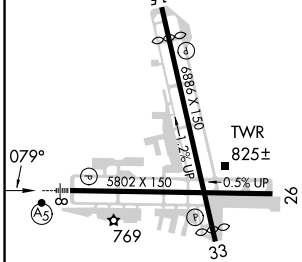
D-ATIS <b>134.5</b>	SOCAL APP CON <b>120.4 360.6 (NORTH) 134.2 338.2 (WEST)</b>	BURBANK TOWER <b>118.7 254.3</b>	GND CON <b>123.9 348.6</b>	CLNC DEL <b>118.0 348.6</b>	CPDLC
------------------------	--	-------------------------------------	-------------------------------	--------------------------------	-------



SW-3, 23 JAN 2025 to 20 FEB 2025

SW-3, 23 JAN 2025 to 20 FEB 2025

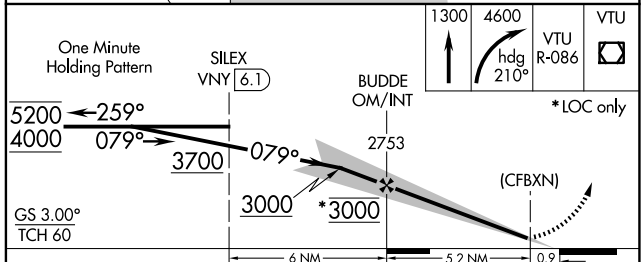
ELEV 778	<b>D</b>	TDZE 727
----------	----------	----------



MIRL Rwy 15-33  
HIRL Rwy 8-26  
REIL Rws 15, 26 and 33

FAF to MAP 5.2 NM

Knots	60	90	120	150	180
Min:Sec	5:12	3:28	2:36	2:05	1:44



CATEGORY	A	B	C	D
S-ILS 8 #		1075/50	348 (300-1)	
S-LOC 8 #		1160/50	433 (400-1)	
<b>C</b> CIRCLING	1280-1 1/8 502 (600-1 1/8)	1640-1 1/4 862 (900-1 1/4)	2240-3 1462 (1500-3)	2320-3 1542 (1600-3)