

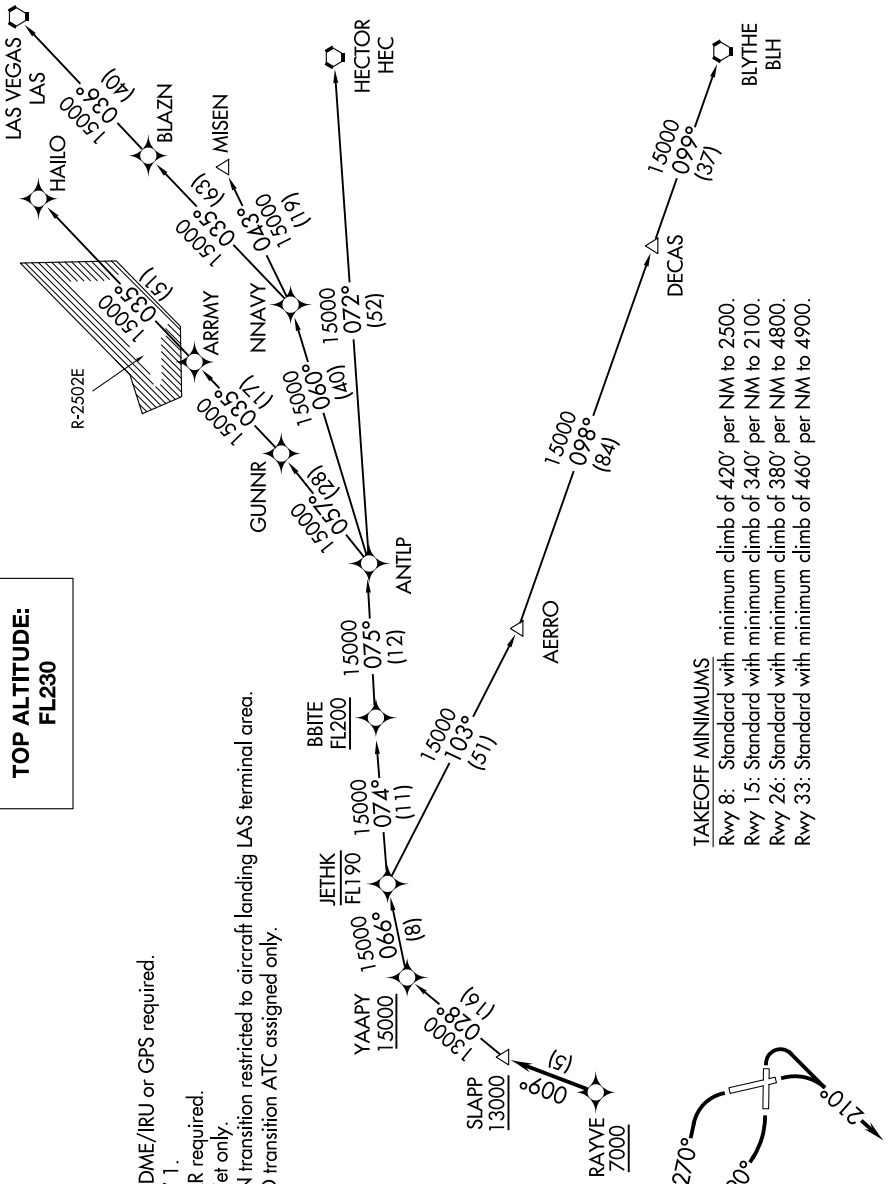
SW-3, 23 JAN 2025 to 20 FEB 2025

**TOP ALTITUDE:  
FL230**

CINCDEL  
118.0 348.6  
CPDLC  
SOCAL DEP CON  
124.6 298.85

- NOTE: DME/DME/IRU or GPS required.
- NOTE: RNAV 1.
- NOTE: RADAR required.
- NOTE: Turbojet only.
- NOTE: MISEN transition restricted to aircraft landing LAS terminal area.
- NOTE: HAILO transition ATC assigned only.

N



TAKEOFF MINIMUMS

- Rwy 8: Standard with minimum climb of 420' per NM to 2500.
- Rwy 15: Standard with minimum climb of 340' per NM to 2100.
- Rwy 26: Standard with minimum climb of 380' per NM to 4800.
- Rwy 33: Standard with minimum climb of 460' per NM to 4900.

(NARRATIVE ON FOLLOWING PAGE)

NOTE: Chart not to scale.

SW-3, 23 JAN 2025 to 20 FEB 2025