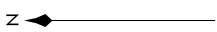
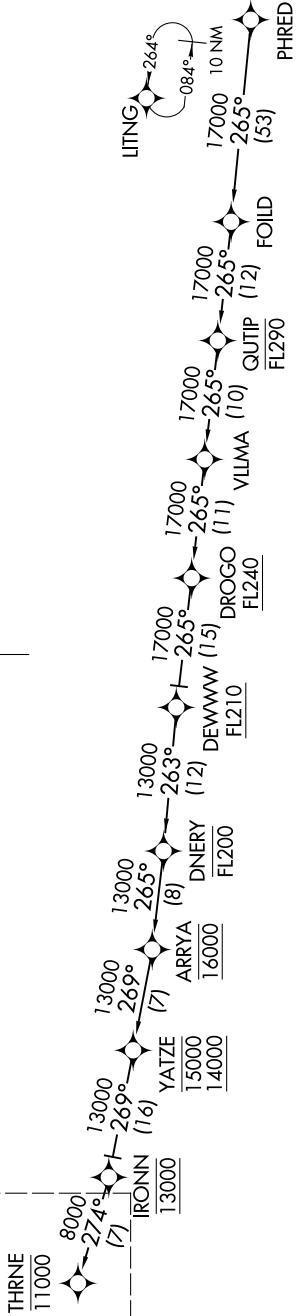


THRNE THREE ARRIVAL (RNAV) Transition Route AL-67 (FAA) BURBANK, CALIFORNIA

SOCAL APP CON
126.7 370.95
BUR D-ATIS
134.5
SMO ATIS
119.15
VNY ATIS
127.55
BURBANK TOWER
118.7 254.3
SANTA MONICA TOWER *
120.1 257.8
VAN NUYS TOWER *
119.3 239.0



See following page
for Arrival Routes.



PHRED TRANSITION (PHRED.THRNE3)

- NOTE: RADAR required.
- NOTE: RNAV 1.
- NOTE: DME/DME/IRU or GPS required.
- NOTE: Turbojet and turboprop aircraft only.
- NOTE: Expect local area altimeter setting reaching FL200.

(CONTINUED ON FOLLOWING PAGE)

NOTE: Chart not to scale.