

WAAS CH 70307 W27A	APP CRS 265°	Rwy Idg TDZE Apt Elev	7985 6121 6160
--	------------------------	-----------------------------	---

RNAV (GPS) RWY 27

CHEYENNE RGNL/JERRY OLSON FLD (CYS)

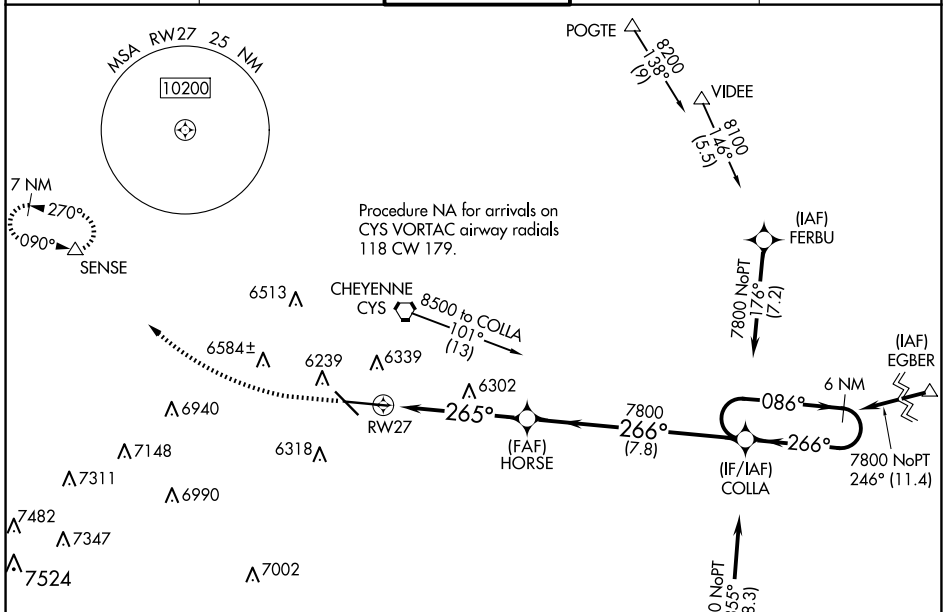
RNP APCH:

For uncompensated Baro-VNAV systems, LNAV/VNAV NA below -24°C or above 45°C. For inop ALS, increase LNAV/VNAV all Cnts visibility to RVR 4000.
RVR 1800 authorized with use of FD or AP or HUD to DA.

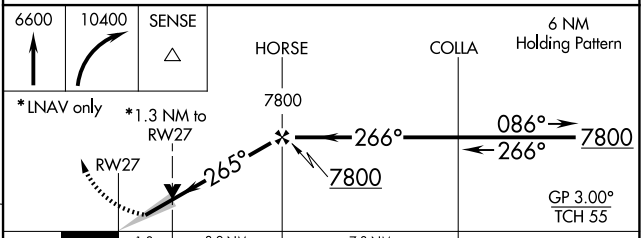
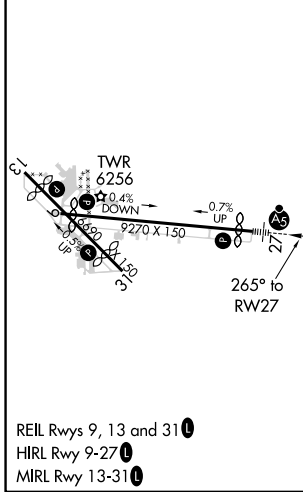


MISSED APPROACH: Climb to 6600, then climbing right turn to 10400 direct SENSE and hold, continue climb-in-hold to 10400.

ATIS 134.425 278.3	CHEYENNE APP CON* 124.55 263.075	CHEYENNE TOWER* 118.7 (CTAF) 257.8	GND CON 121.9 254.275	UNICOM 122.95
------------------------------	--	--	---------------------------------	-------------------------



ELEV 6160	D	TDZE 6121
-----------	----------	-----------



CATEGORY	A	B	C	D
LPV DA#		6321/24	200 (200-1/2)	
LNAV/VNAV DA		6376/24	255 (300-1/2)	
LNAV MDA	6560/24	439 (400-1/2)	6560/40	439 (400-3/4)
C CIRCLING	6640-1	480 (500-1)	6900-2 740 (800-2)	6920-2 1/2 760 (800-2 1/2)

NW-1, 23 JAN 2025 to 20 FEB 2025

NW-1, 23 JAN 2025 to 20 FEB 2025