

WAAS CH 77618 W21A	APP CRS 214°	Rwy Idg TDZE Apt Elev	6095 4187 4187
--	------------------------	-----------------------------	---

RNAV (GPS) RWY 21

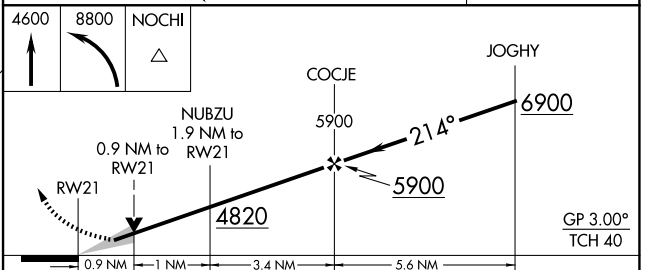
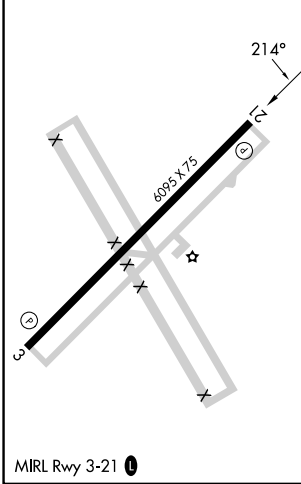
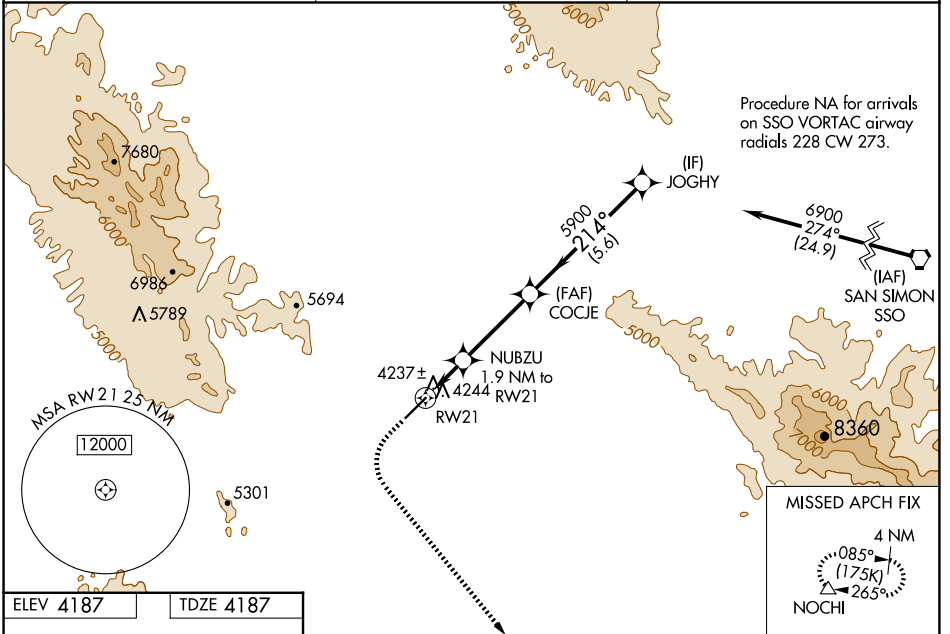
COCHISE COUNTY (P33)

RNP APCH - GPS.

⚠ Baro-VNAV NA when using Douglas Bisbee altimeter setting. For uncompensated Baro-VNAV systems, LNAV/VNAV NA below -23°C or above 54°C. When local altimeter setting not received, use Douglas Bisbee altimeter setting and increase LPV DA to 4555 feet and all visibilities ¼ SM; increase LNAV/VNAV DA to 4555 feet and all visibilities ¼ SM; increase all MDAs 120 feet.

MISSED APPROACH: Climb to 4600 then climbing left turn to 8800 direct NOCHI and hold, continue climb-in-hold 8800.

AWOS-3PT 119.025	ALBUQUERQUE CENTER 134.45 327.15	UNICOM 122.8 (CTAF) 0
----------------------------	--	---------------------------------



CATEGORY	A	B	C	D
LPV DA	4437-7/8	250 (300-7/8)		NA
LNAV/VNAV DA	4437-7/8	250 (300-7/8)		NA
LNAV MDA	4520-1	333 (400-1)		NA
CIRCLING	4600-1	4660-1		NA
	413 (500-1)	473 (500-1)		

SW-4, 23 JAN 2025 to 20 FEB 2025

SW-4, 23 JAN 2025 to 20 FEB 2025