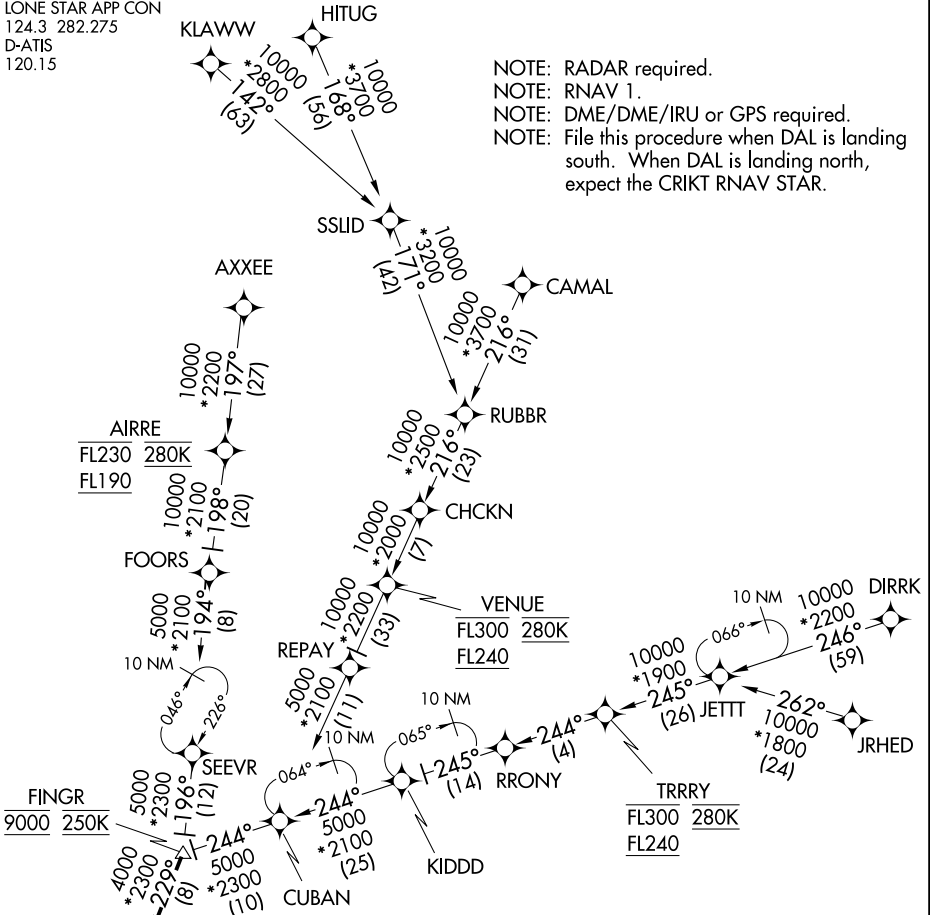


HIBIL THREE ARRIVAL (RNAV)

DALLAS, TEXAS

LONE STAR APP CON
124.3 282.275
D-ATIS
120.15

NOTE: RADAR required.
NOTE: RNAV 1.
NOTE: DME/DME/IRU or GPS required.
NOTE: File this procedure when DAL is landing south. When DAL is landing north, expect the CRIKT RNAV STAR.



NOTE: JRHED, RUBBR, and JETT Transitions: ATC assigned only.
NOTE: AXSEE and RRONY Transitions: For aircraft filing FL230 and below.
NOTE: AIRRE Transition: For traffic at or below FL190 only.
NOTE: Aircraft departing the Oklahoma City terminal area file and expect the AIRRE enroute transition.

ARRIVAL ROUTE DESCRIPTION

<u>AIRRE TRANSITION (AIRRE.HIBIL3)</u>	<u>JETT TRANSITION (JETT.HIBIL3)</u>
<u>AXSEE TRANSITION (AXSEE.HIBIL3)</u>	<u>JRHED TRANSITION (JRHED.HIBIL3)</u>
<u>CAMAL TRANSITION (CAMAL.HIBIL3)</u>	<u>KLAWWW TRANSITION (KLAWWW.HIBIL3)</u>
<u>DIRRK TRANSITION (DIRRK.HIBIL3)</u>	<u>RRONY TRANSITION (RRONY.HIBIL3)</u>
<u>HITUG TRANSITION (HITUG.HIBIL3)</u>	<u>RUBBR TRANSITION (RUBBR.HIBIL3)</u>

From FINGR on track 229° to SLANT, then on track 232° to HIBIL, then on track 232°. Expect RADAR vectors to final approach course.

NOTE: Chart not to scale.

HIBIL THREE ARRIVAL (RNAV)

SC-2, 23 JAN 2025 to 20 FEB 2025

SC-2, 23 JAN 2025 to 20 FEB 2025