

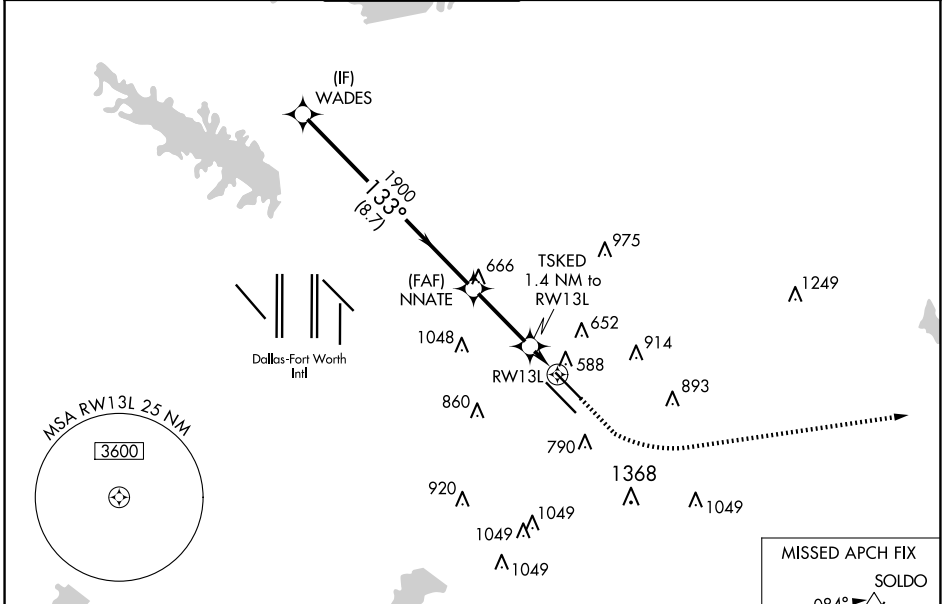
WAAS CH <b>99723</b> W <b>13B</b>	APP CRS <b>133°</b>	Rwy Idg <b>7352</b> TDZE <b>485</b> Apt Elev <b>487</b>
---	------------------------	---

# RNAV (GPS) Z RWY 13L

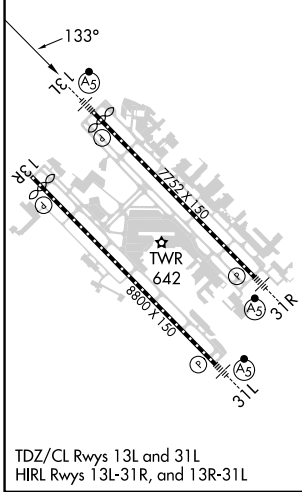
DALLAS LOVE FLD (DAL)

RNP APCH.	<p>Simultaneous approach authorized. Use of FD or AP required during simultaneous operations.</p> <p><b>▽</b> LNAV procedure NA during simultaneous operations. For uncompensated Baro-VNAV systems, procedure NA below -6°C or above 54°C. For inop ALS, increase LNAV/VNAV all Cats visibility to RVR 4500 and LNAV Cats C/D visibility to RVR 5500.</p>	<p>MALSRL</p>	<p>MISSED APPROACH: Climb to 1000 then climbing left turn to 3000 direct SOLDO and hold.</p>
-----------	--	---------------	--

D-ATIS <b>120.15</b>	LONE STAR APP CON NORTH <b>124.3 282.275</b> SOUTH <b>125.2 343.65</b>	LOVE TOWER <b>123.7 239.3</b>	GND CON <b>121.75 348.6</b>	CLNC DEL <b>127.9</b>	CPDLC
-------------------------	--	----------------------------------	--------------------------------	--------------------------	-------



ELEV <b>487</b>	<b>D</b>	TDZE <b>485</b>
-----------------	----------	-----------------



<p>WADES 2500</p> <p>GP 3.00° TCH 55</p> <p>133°</p> <p>1900</p> <p>NNATE 1900</p> <p>TSKED 1900</p> <p>1.4 NM to RWY 13L</p> <p>*980</p> <p>RWY 13L</p> <p>8.7 NM</p> <p>2.9 NM</p> <p>1.4 NM</p>	<p>MISSED APCH FIX SOLDO</p> <p>084°</p> <p>264°</p> <p>4 NM</p> <p>1000</p> <p>3000</p> <p>SOLDO</p> <p>*LNAV only.</p>																									
<table border="1"> <tr> <th>CATEGORY</th> <th>A</th> <th>B</th> <th>C</th> <th>D</th> </tr> <tr> <td>LPV DA</td> <td></td> <td>685/18</td> <td>200 (200-½)</td> <td></td> </tr> <tr> <td>LNAV/VNAV DA</td> <td></td> <td>764/24</td> <td>279 (300-½)</td> <td></td> </tr> <tr> <td>LNAV MDA</td> <td>840/24</td> <td>355 (400-½)</td> <td>840/30</td> <td>355 (400-¾)</td> </tr> <tr> <td><b>C</b> CIRCLING</td> <td>1000-1 513 (600-1)</td> <td>1140-1 653 (700-1)</td> <td>1220-2 733 (800-2)</td> <td>1520-3 1033 (1100-3)</td> </tr> </table>	CATEGORY	A	B	C	D	LPV DA		685/18	200 (200-½)		LNAV/VNAV DA		764/24	279 (300-½)		LNAV MDA	840/24	355 (400-½)	840/30	355 (400-¾)	<b>C</b> CIRCLING	1000-1 513 (600-1)	1140-1 653 (700-1)	1220-2 733 (800-2)	1520-3 1033 (1100-3)	
CATEGORY	A	B	C	D																						
LPV DA		685/18	200 (200-½)																							
LNAV/VNAV DA		764/24	279 (300-½)																							
LNAV MDA	840/24	355 (400-½)	840/30	355 (400-¾)																						
<b>C</b> CIRCLING	1000-1 513 (600-1)	1140-1 653 (700-1)	1220-2 733 (800-2)	1520-3 1033 (1100-3)																						

SC-2, 23 JAN 2025 to 20 FEB 2025

SC-2, 23 JAN 2025 to 20 FEB 2025