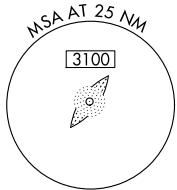
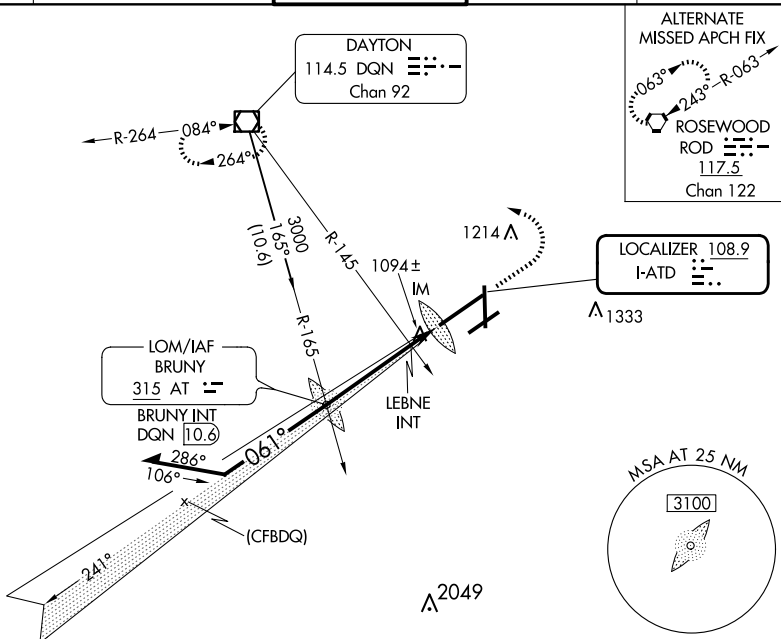


LOC I-ATD <b>108.9</b>	APP CRS <b>061°</b>	Rwy Idg <b>10900</b> TDZE <b>998</b> Apt Elev <b>1009</b>
---------------------------	------------------------	---

# ILS or LOC RWY 6L

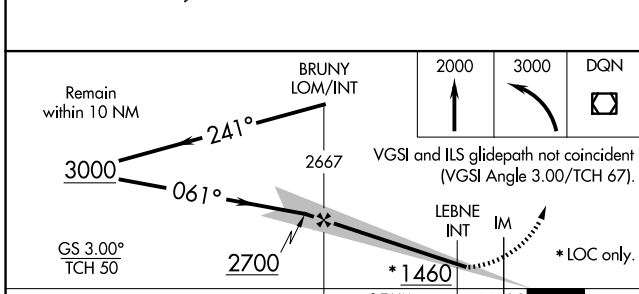
JAMES M COX DAYTON INTL (DAY)

<p><b>▽</b> Simultaneous approach authorized. <b>▲</b> For inop ALSF-2, increase S-LOC 6L Cat C/D visibility to 1½ mile.</p>	<p>ALSF-2</p>	<p>MISSED APPROACH: Climb to 2000 then climbing left turn to 3000 direct DQN VOR/DME and hold.</p>		
<p>ATIS <b>125.8</b></p>	<p>COLUMBUS APP CON <b>134.45 323.15</b></p>	<p>DAYTON TOWER <b>119.9 257.7</b></p>	<p>GND CON <b>121.9</b></p>	<p>CINC DEL <b>121.75</b></p>



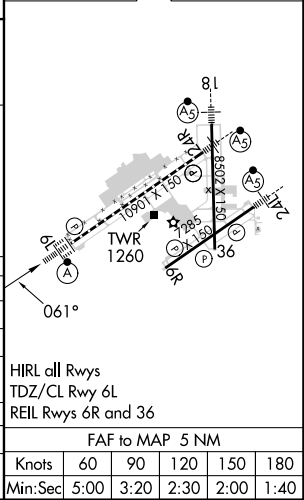
EC-2, 23 JAN 2025 to 20 FEB 2025

EC-2, 23 JAN 2025 to 20 FEB 2025



ELEV 1009	<b>D</b>	TDZE 998
-----------	----------	----------

CATEGORY	A		B		C		D	
	S-ILS 6L	1198/18 200 (200-½)						
S-LOC 6L	1460/24	462 (500-½)	1460/50		462 (500-1)			
<b>C</b> CIRCLING	1580-1	571 (600-1)	1580-1½		631 (700-2)			
LEBNE FIX MINIMUMS (DUAL VOR RECEIVERS REQUIRED)								
S-LOC 6L	1380/24	382 (400-½)	1380/35		382 (400-¾)			
<b>C</b> CIRCLING	1580-1	571 (600-1)	1580-1½		631 (700-2)			



FAF to MAP 5 NM					
Knots	60	90	120	150	180
Min:Sec	5:00	3:20	2:30	2:00	1:40