

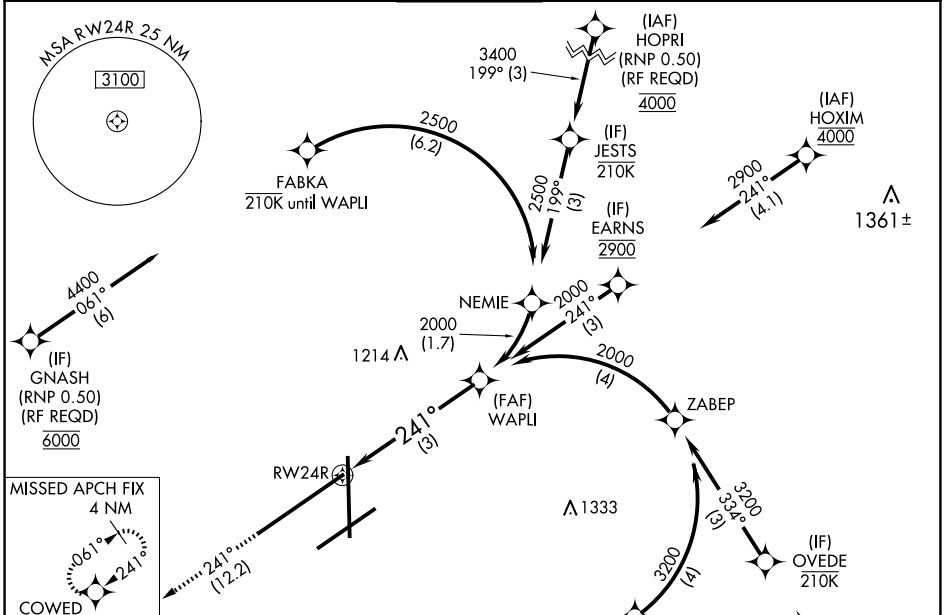
APP CRS	Rwy Idg	<b>10900</b>
<b>241°</b>	TDZE	<b>997</b>
	Apf Elev	<b>1009</b>

# RNAV (RNP) Y RWY 24R

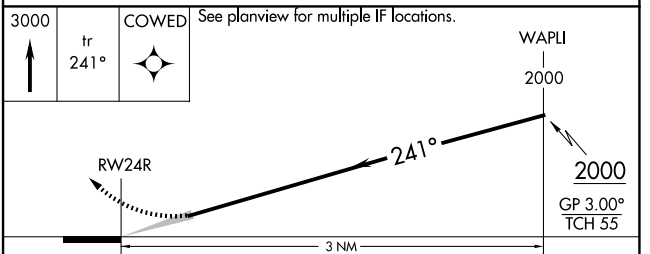
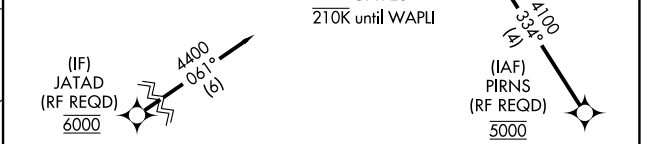
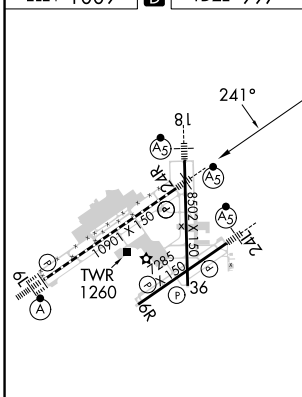
JAMES M COX DAYTON INTL (DAY)

RNP AR APCH.	MALSR	MISSED APPROACH: Climb to 3000 on track 241° COWED and hold.
<p>▼ For inop ALS, increase RNP 0.10 all Cats visibility to RVR 5500 and RNP 0.30 all Cats visibility to 1 3/8 SM. For uncompensated Baro-VNAV systems, procedure NA below -19°C or above 54°C.</p>		

ATIS <b>125.8</b>	COLUMBUS APP CON <b>134.45 323.15</b>	DAYTON TOWER <b>119.9 257.7</b>	GND CON <b>121.9</b>	CLNC DEL <b>121.75</b>
----------------------	--	------------------------------------	-------------------------	---------------------------



ELEV 1009 **D** TDZE 997



CATEGORY	A	B	C	D
RNP 0.10 DA		1334/35	337 (400-5%)	
RNP 0.30 DA		1418/50	421 (500-1)	

HIRL all Rwys  
TDZ/CL Rwy 6L  
REIL Rwys 6R and 36

DAYTON, OHIO  
Orig-C 16AUG18

JAMES M COX DAYTON INTL (DAY)  
39°54'N-84°13'W **RNAV (RNP) Y RWY 24R**

**AUTHORIZATION REQUIRED**

EC-2, 23 JAN 2025 to 20 FEB 2025

EC-2, 23 JAN 2025 to 20 FEB 2025