

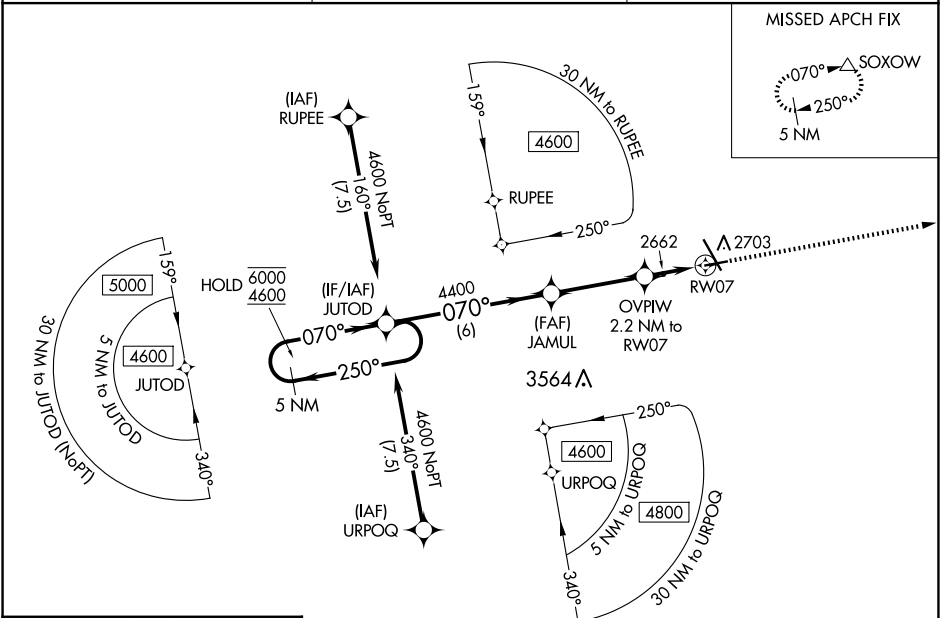
WAAS CH <b>90544</b> <b>W07A</b>	APP CRS <b>070°</b>	Rwy ldg <b>4700</b> TDZE <b>2583</b> Apt Elev <b>2592</b>
--	------------------------	---

# RNAV (GPS) RWY 7

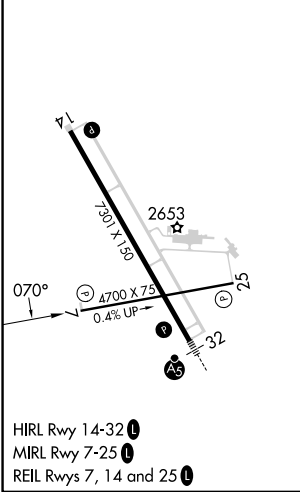
DICKINSON/THEODORE ROOSEVELT RGNL (DIK)

RNP APCH - GPS.	MISSED APPROACH: Climb to 4600 direct SOXOW and hold.
-----------------	---

ASOS <b>118.375</b>	MINNEAPOLIS CENTER <b>124.25 236.825</b>	UNICOM <b>123.0 (CTAF) 0</b>
------------------------	---	---------------------------------



ELEV <b>2592</b>	<b>D</b>	TDZE <b>2583</b>
------------------	----------	------------------



5 NM Holding Pattern		JUTOD		JAMUL		OVPW 2.2 NM to RW07		4600	SOXOW
6000 ← 250°		4600 → 070°		4400		3320		↑	△
GP 3.00°		TCH 45		4400		3320			
		6 NM		3.4 NM		1.2 NM		1 NM	
CATEGORY	A	B	C	D					
LPV DA	2833-1		250 (300-1)						
LNAV/VNAV DA	2833-1		250 (300-1)						
LNAV MDA	2920-1		337 (400-1)						
CIRCLING	3060-1	468 (500-1)	3120-1½	528 (600-1½)	3200-2	608 (700-2)			

NC-1, 23 JAN 2025 to 20 FEB 2025

NC-1, 23 JAN 2025 to 20 FEB 2025